

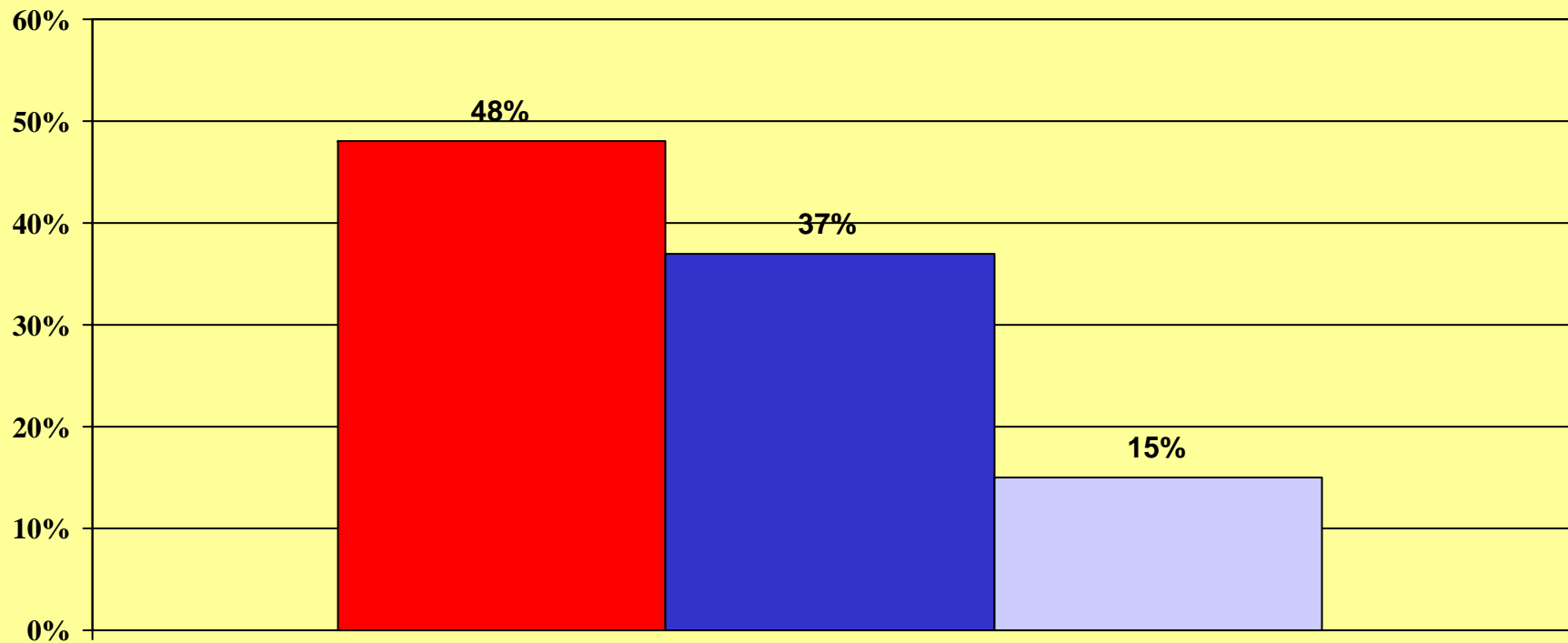
CIVITAS INSTITUTE  
**D**ECISION **M**AKER  
POLL



**November 2007**

CIVITAS INSTITUTE

# Affiliation

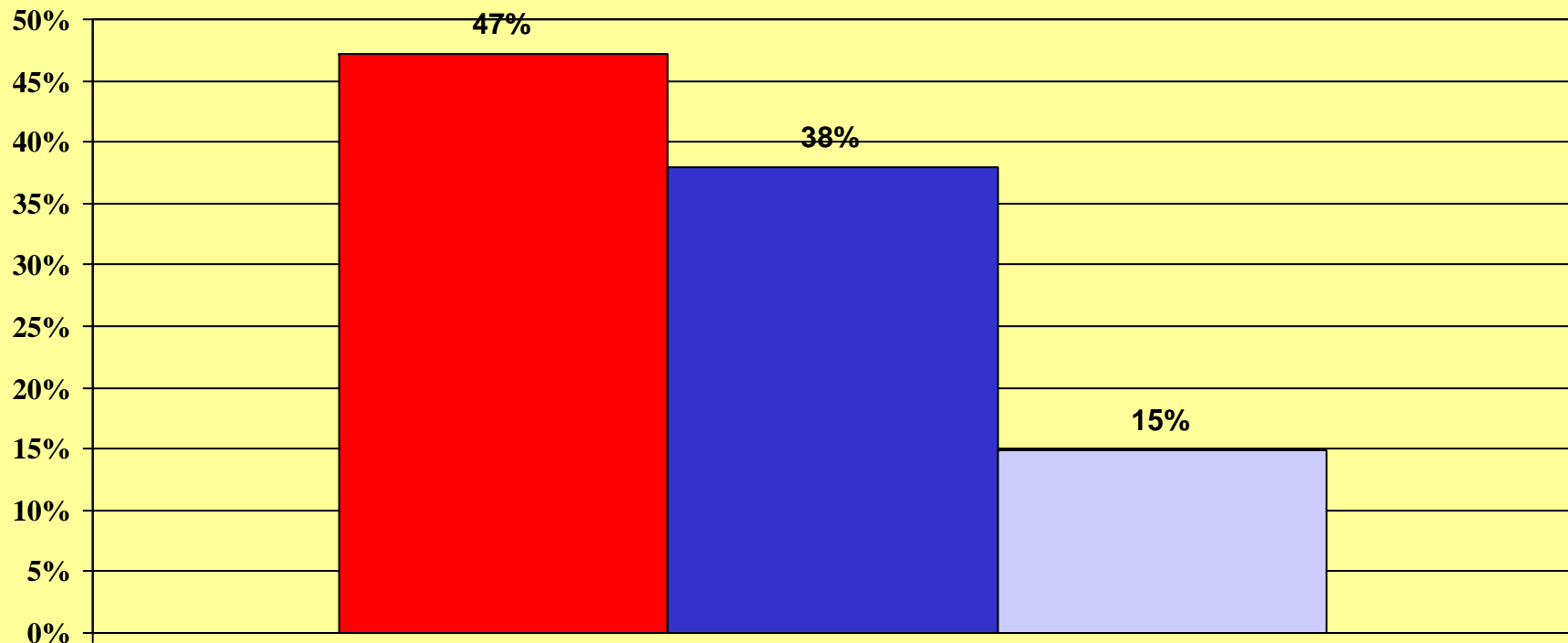


November 2007



CIVITAS INSTITUTE

# Do you feel things in North Carolina are generally headed in the right direction or have gotten off on the wrong track?

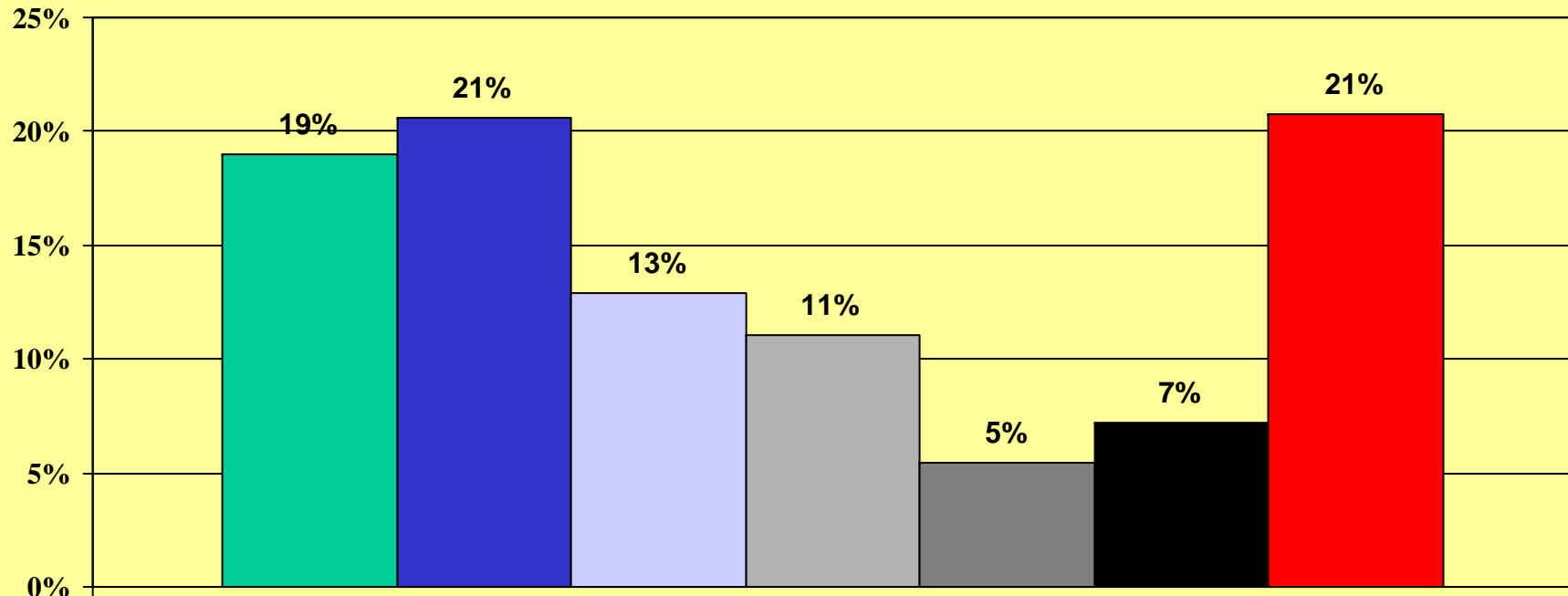


November 2007

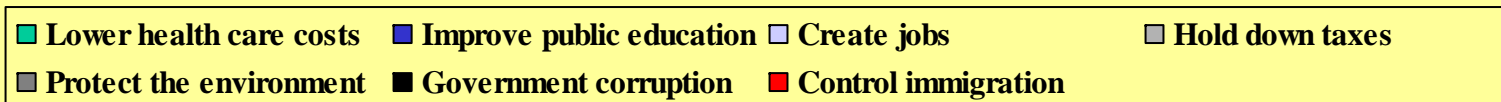
■ Right direction ■ Wrong track ■ Not sure

CIVITAS INSTITUTE

# Which of the following issues or programs needs the most attention from State Government:

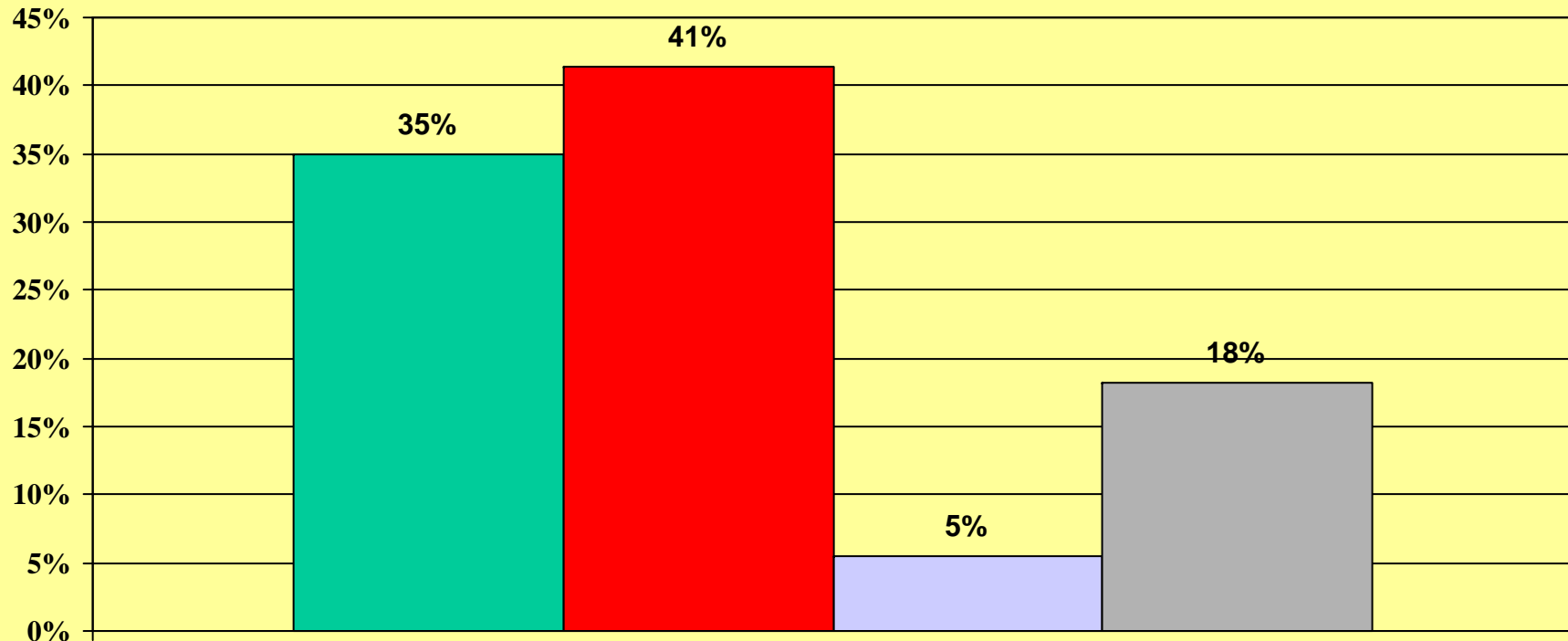


November 2007



CIVITAS INSTITUTE

# If the election for State Legislature were held today, would you be voting:

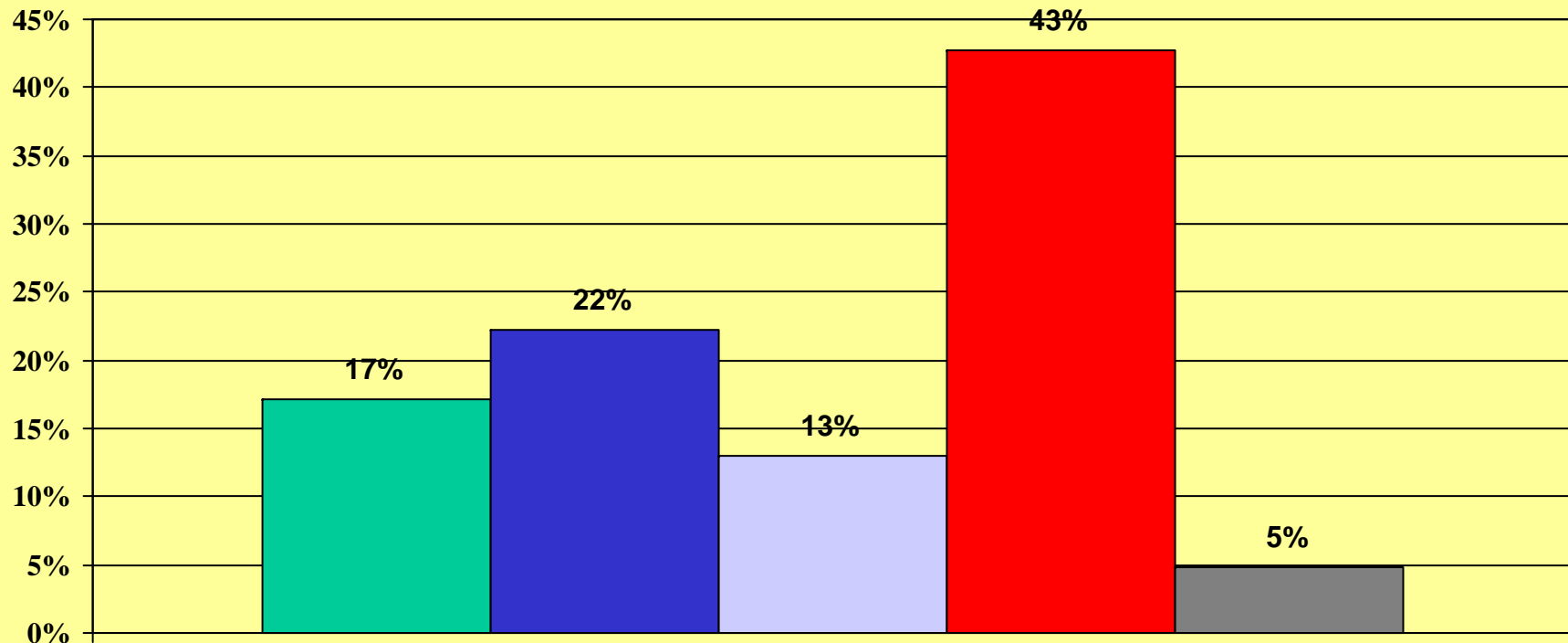


November 2007

■ Republican ■ Democratic ■ Neither ■ Not sure

CIVITAS INSTITUTE

# Thinking about national issues, do you approve or disapprove of the job George W. Bush is doing as President?

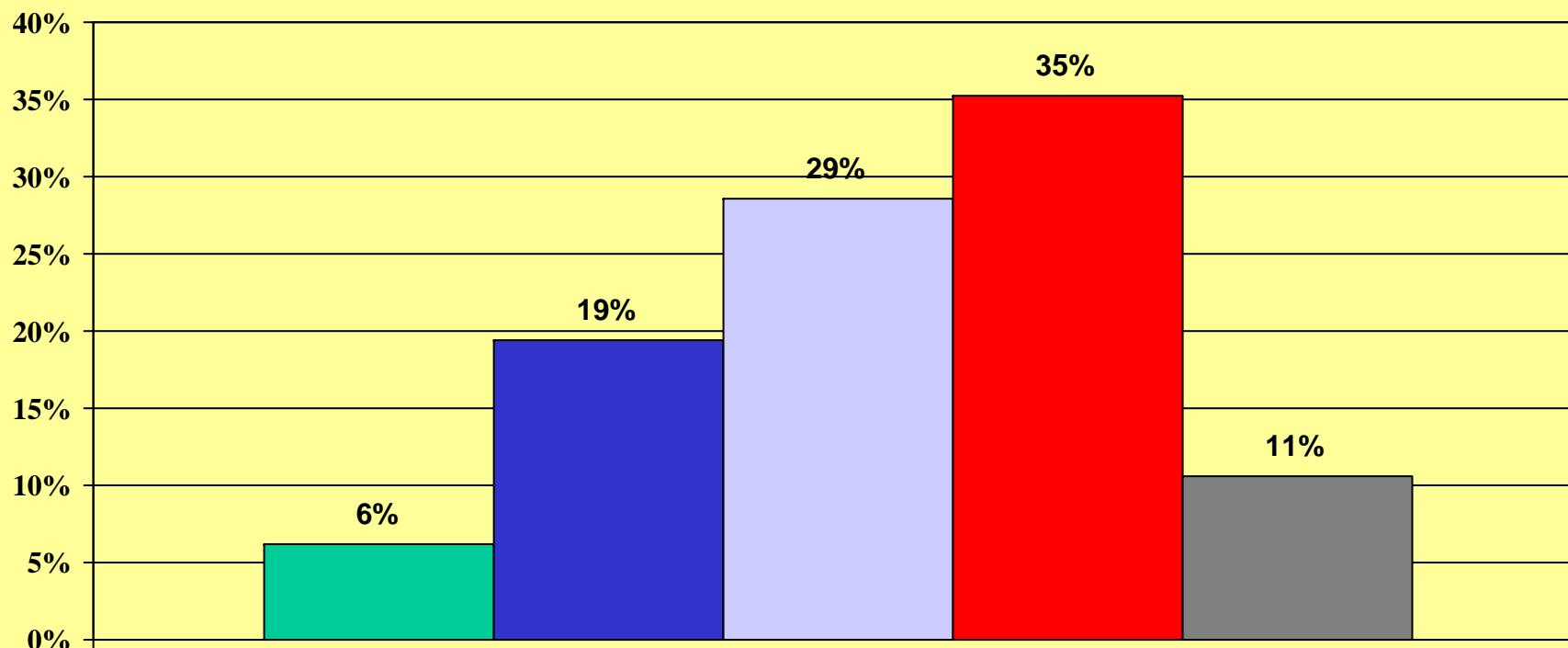


November 2007

Strongly approve Somewhat approve Somewhat disapprove Strongly disapprove NOT SURE

CIVITAS INSTITUTE

# Do you approve or disapprove of the job Congress is doing?

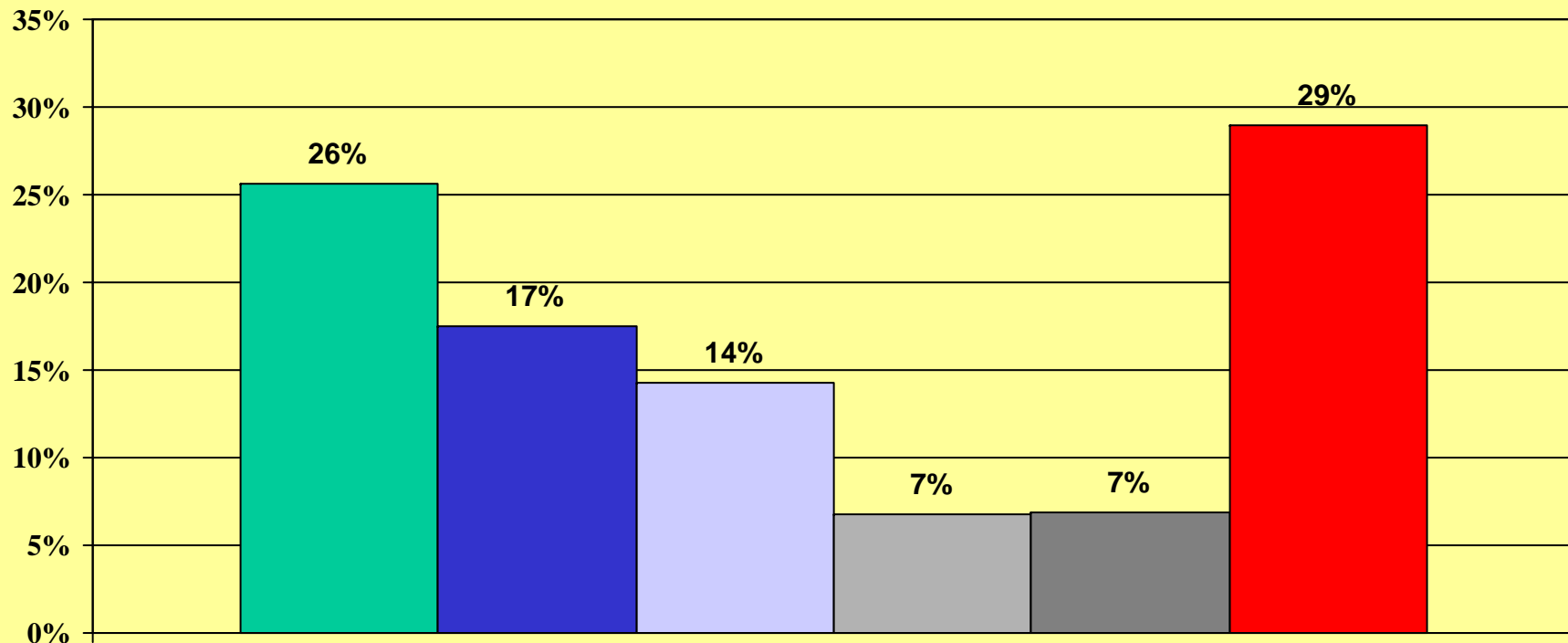


November 2007

Strongly approve Somewhat approve Somewhat disapprove Strongly disapprove Not sure

CIVITAS INSTITUTE

**If the 2008 Democratic primary election for President were held today, which of the following Democrats would you vote for:**

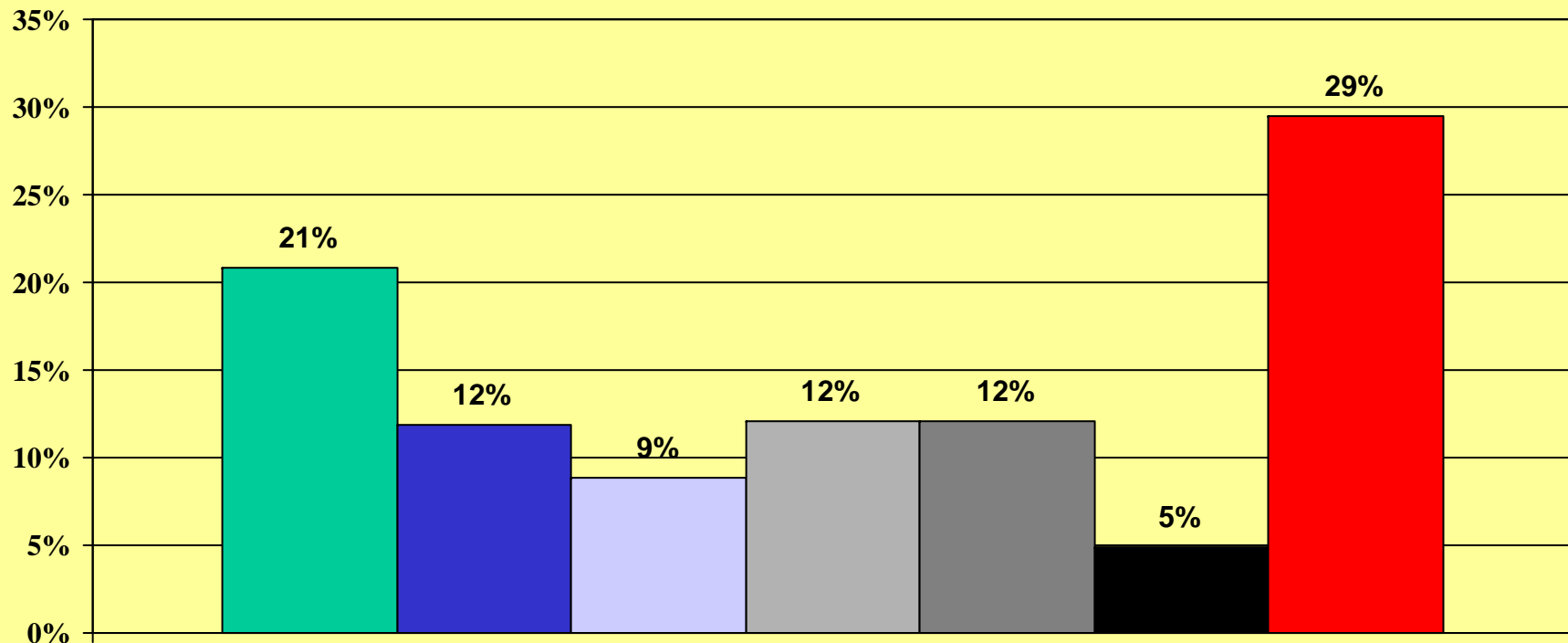


November 2007

■ Hillary Clinton ■ John Edwards ■ Barack Obama ■ Bill Richardson ■ None mentioned ■ Not sure

CIVITAS INSTITUTE

**If the 2008 Republican primary election for President were held today, which of the following Republicans would you vote for:**

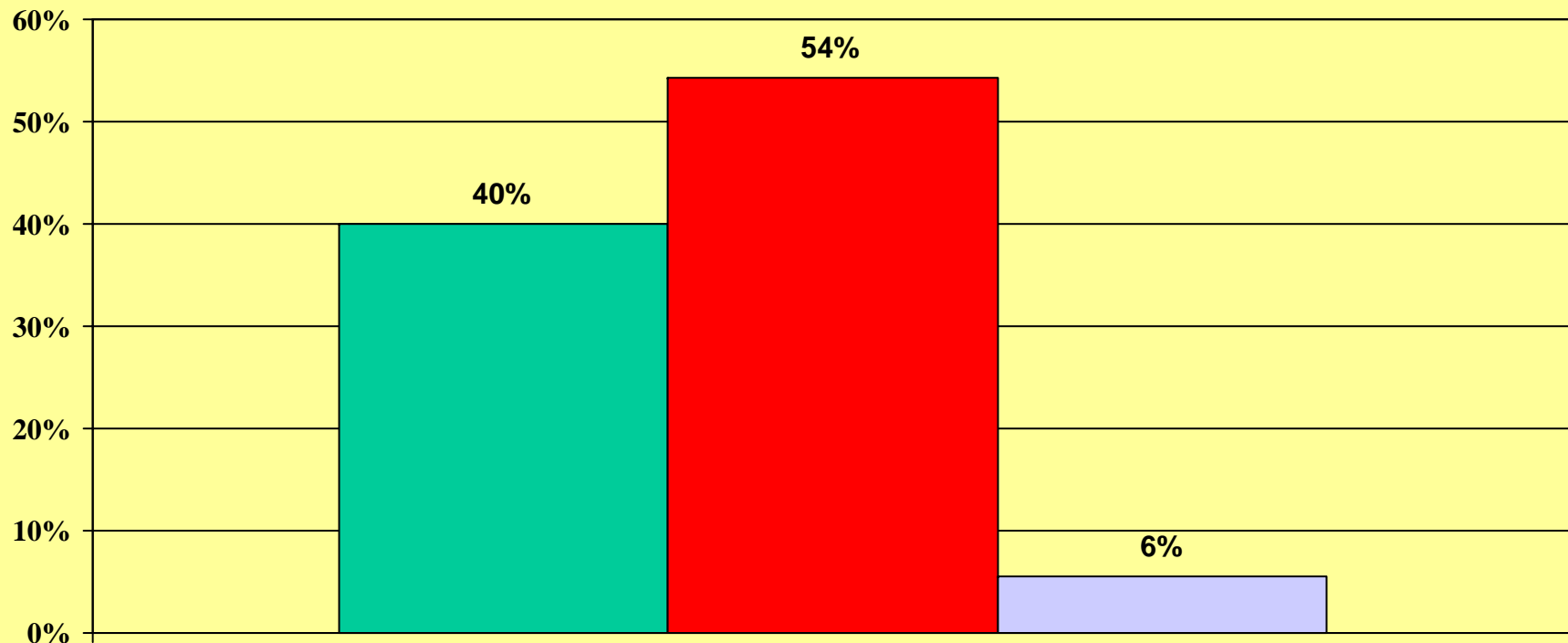


November 2007

■ Rudy Giuliani ■ John McCain ■ Mitt Romney ■ Fred Thompson ■ Mike Huckabee ■ None mentioned ■ Not sure

CIVITAS INSTITUTE

# Do you have a strong enough negative feeling about Hillary Clinton that you would not vote for her regardless of who the Republican candidate was?

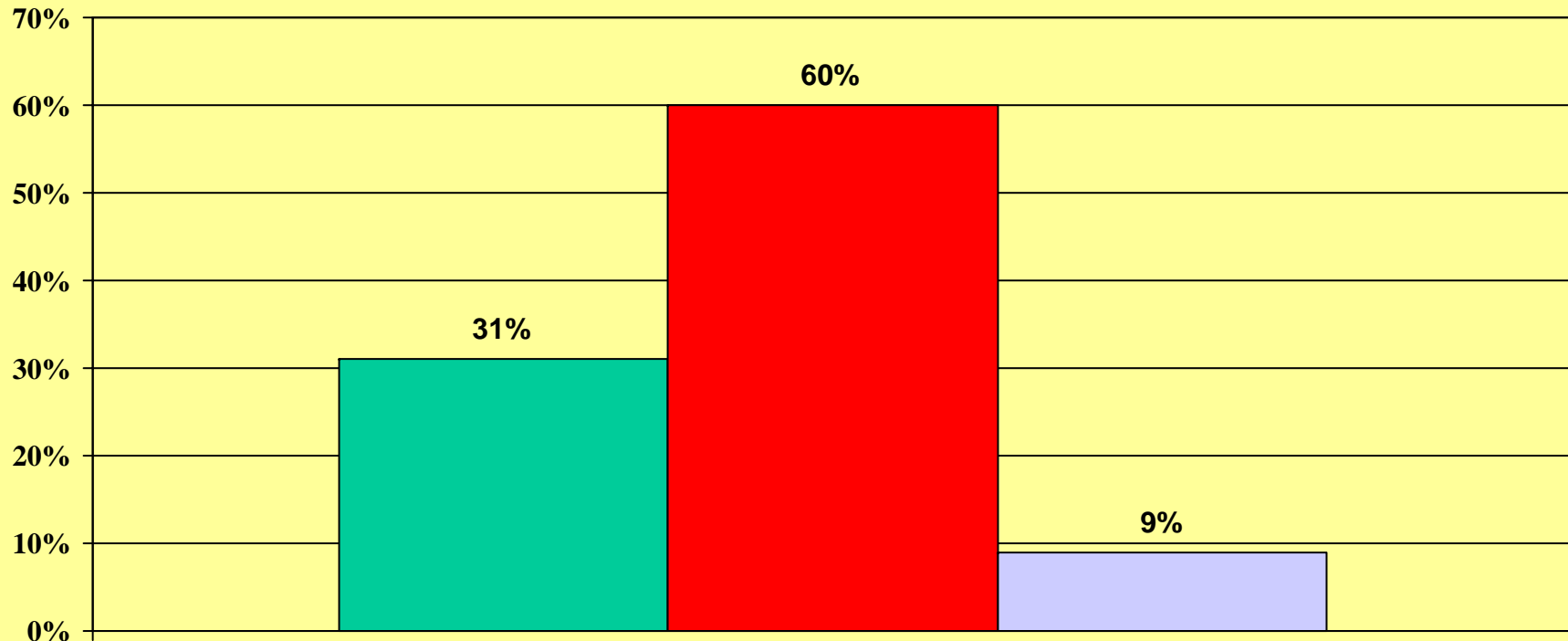


November 2007

Yes No Not sure

CIVITAS INSTITUTE

# Do you think Hillary Clinton says what she believes most of the time, or does she say what she thinks you want to hear?

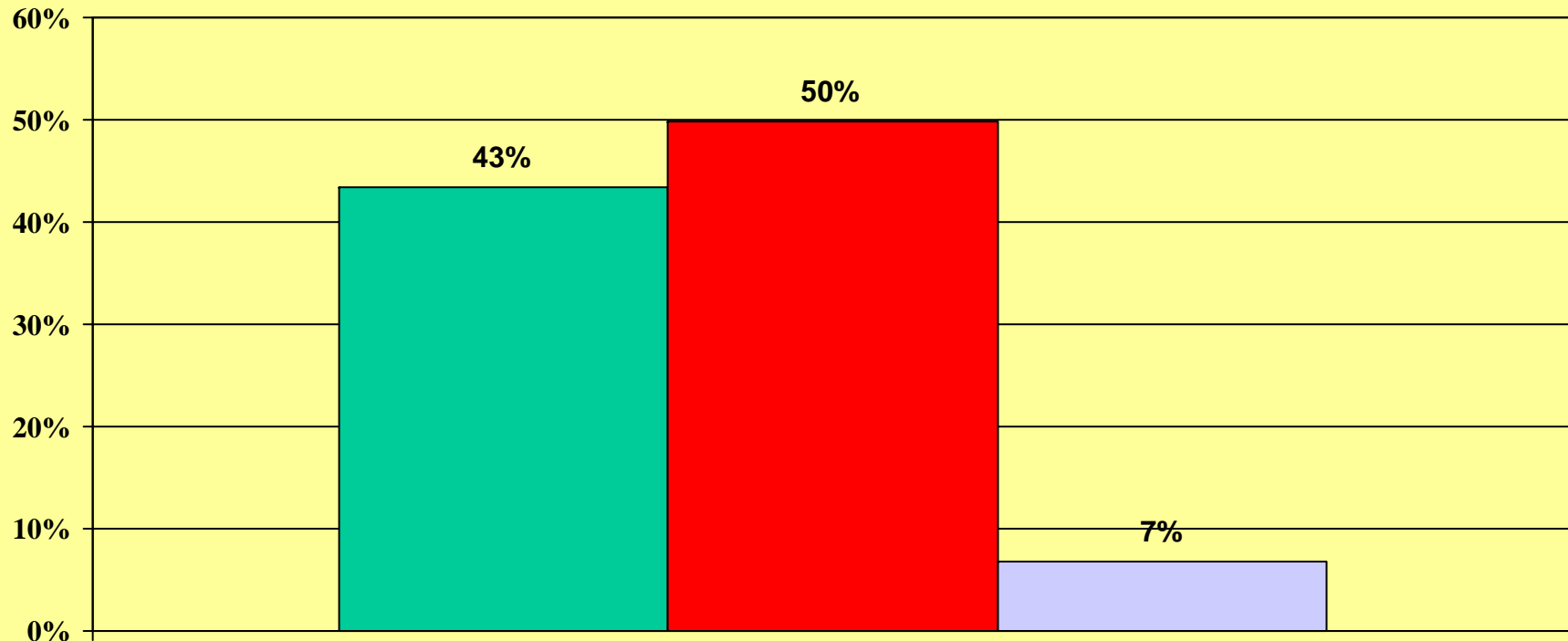


November 2007

■ What she believes ■ What you want to hear ■ Not sure

CIVITAS INSTITUTE

# Are social issues like abortion and same sex marriage so important to you that you could not vote for a Presidential candidate who did not share your views on these issues?

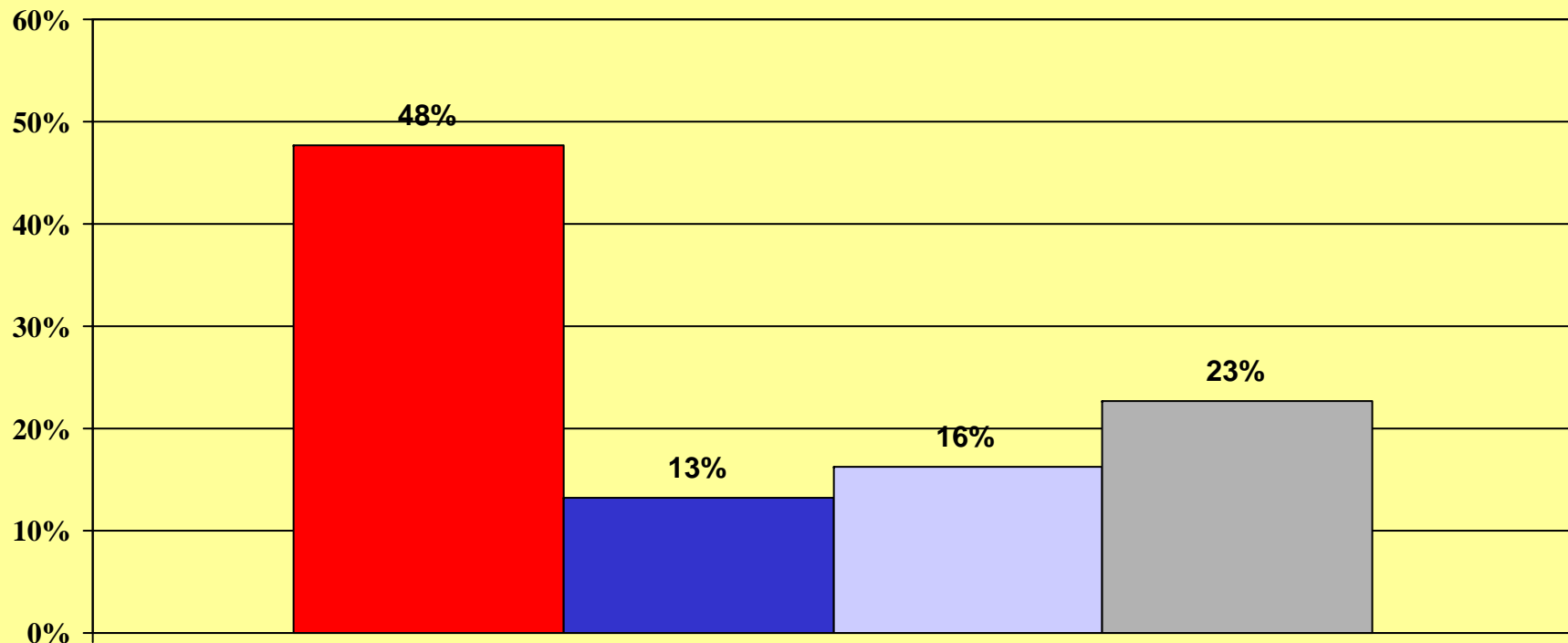


November 2007

Yes No Not sure

CIVITAS INSTITUTE

# Regardless of how you intend to vote in 2008, which Democratic candidate do you think has the best chance of winning the general election in November:

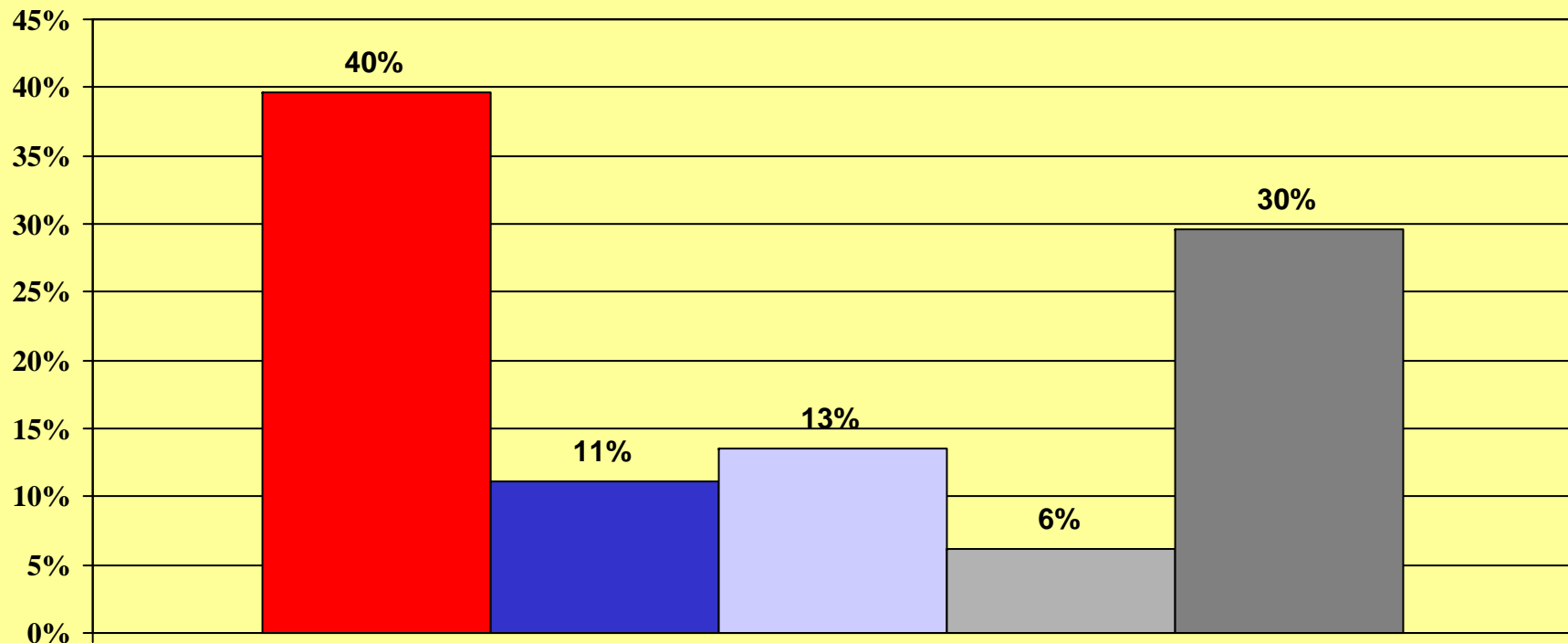


November 2007

■ Hillary Clinton ■ Barack Obama ■ John Edwards ■ Not sure

CIVITAS INSTITUTE

# Regardless of how you intend to vote in 2008, which Republican candidate do you think has the best chance of winning the general election in November:

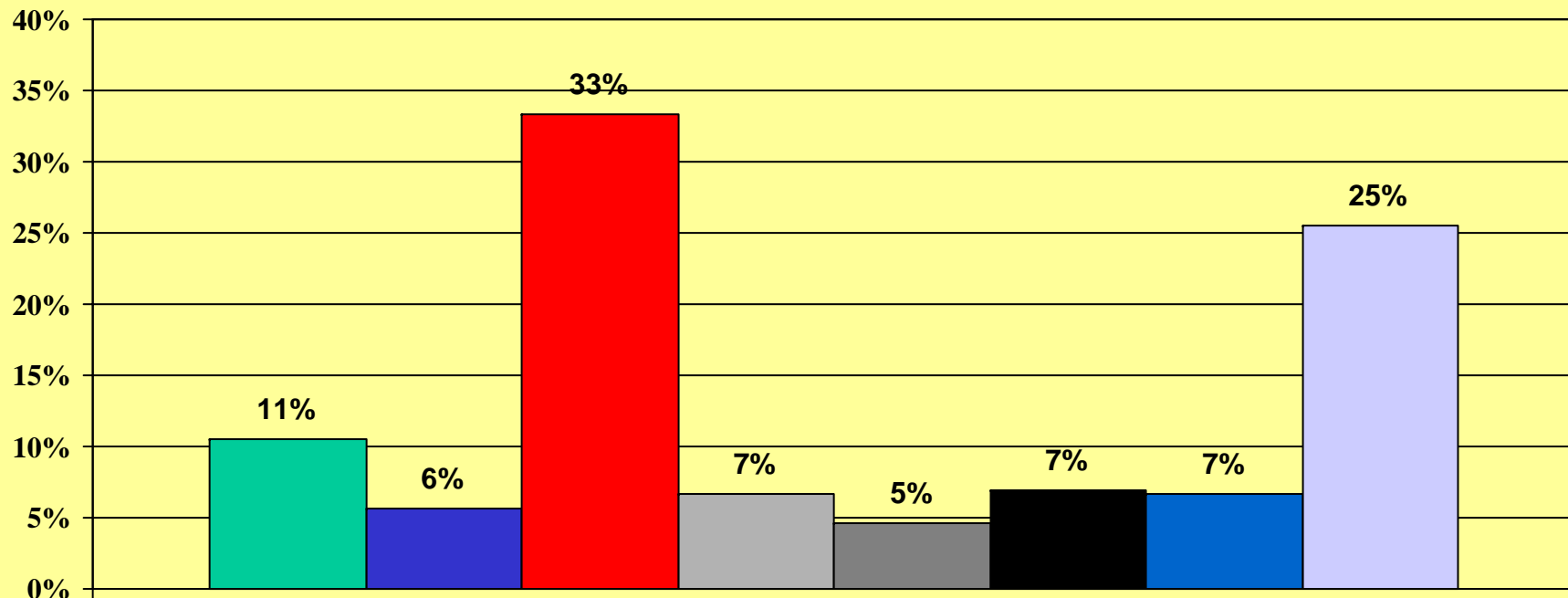


November 2007

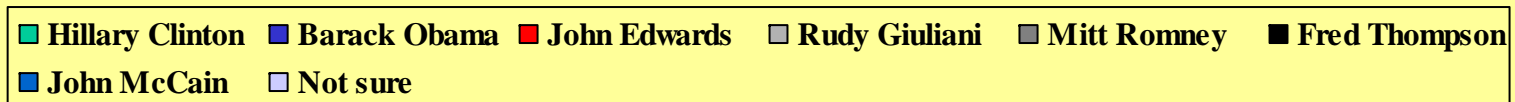
■ Rudy Giuliani ■ Mitt Romney ■ John McCain ■ Fred Thompson ■ Not sure

CIVITAS INSTITUTE

# Regardless of how you intend to vote in 2008, which candidate do you think best understands the needs and the problems of people in North Carolina?

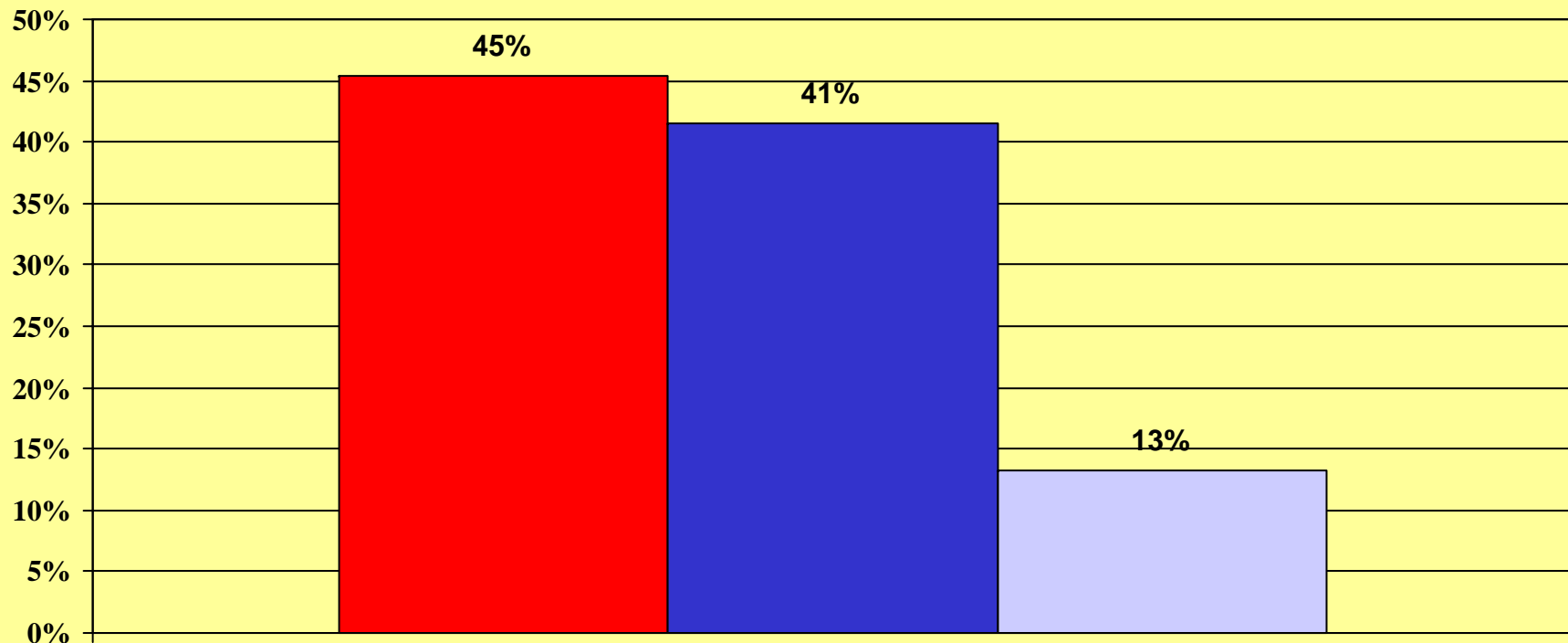


November 2007



CIVITAS INSTITUTE

**If the 2008 election for President were held today and the candidates were Democrat Hillary Clinton and Republican Rudy Giuliani, for whom would you be voting?**

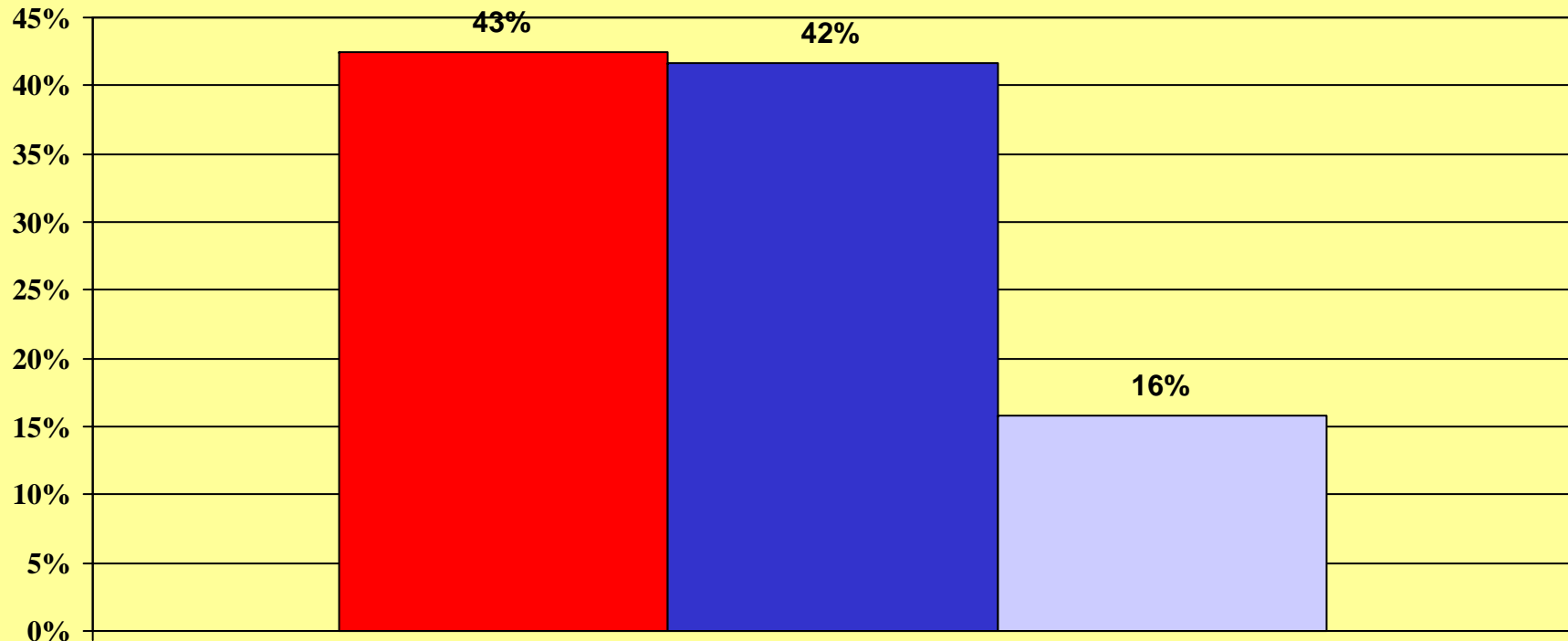


November 2007



CIVITAS INSTITUTE

**If the 2008 election for President were held today and the candidates were Democrat Hillary Clinton and Republican Mitt Romney, for whom would you be voting?**

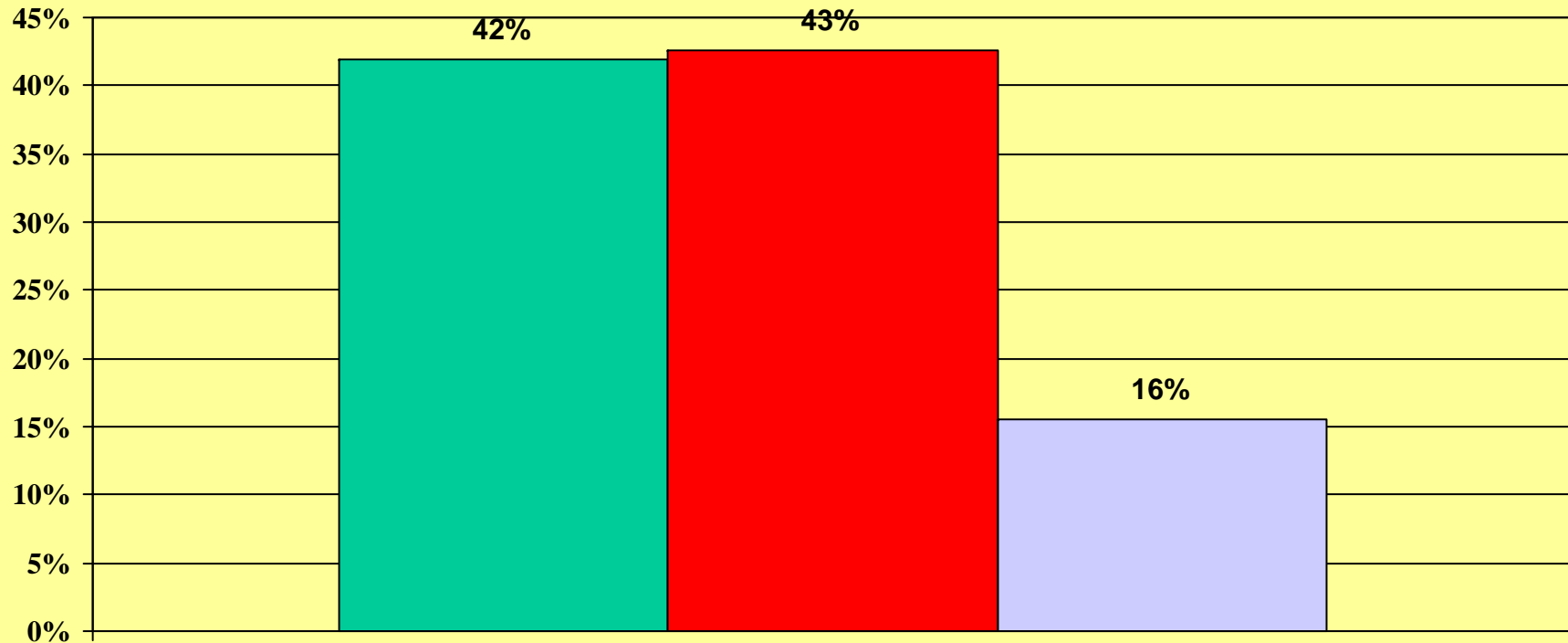


November 2007

■ Romney ■ Clinton ■ Not sure

CIVITAS INSTITUTE

**If the 2008 election for President were held today and the candidates were Democrat Hillary Clinton and Republican Fred Thompson, for whom would you be voting?**

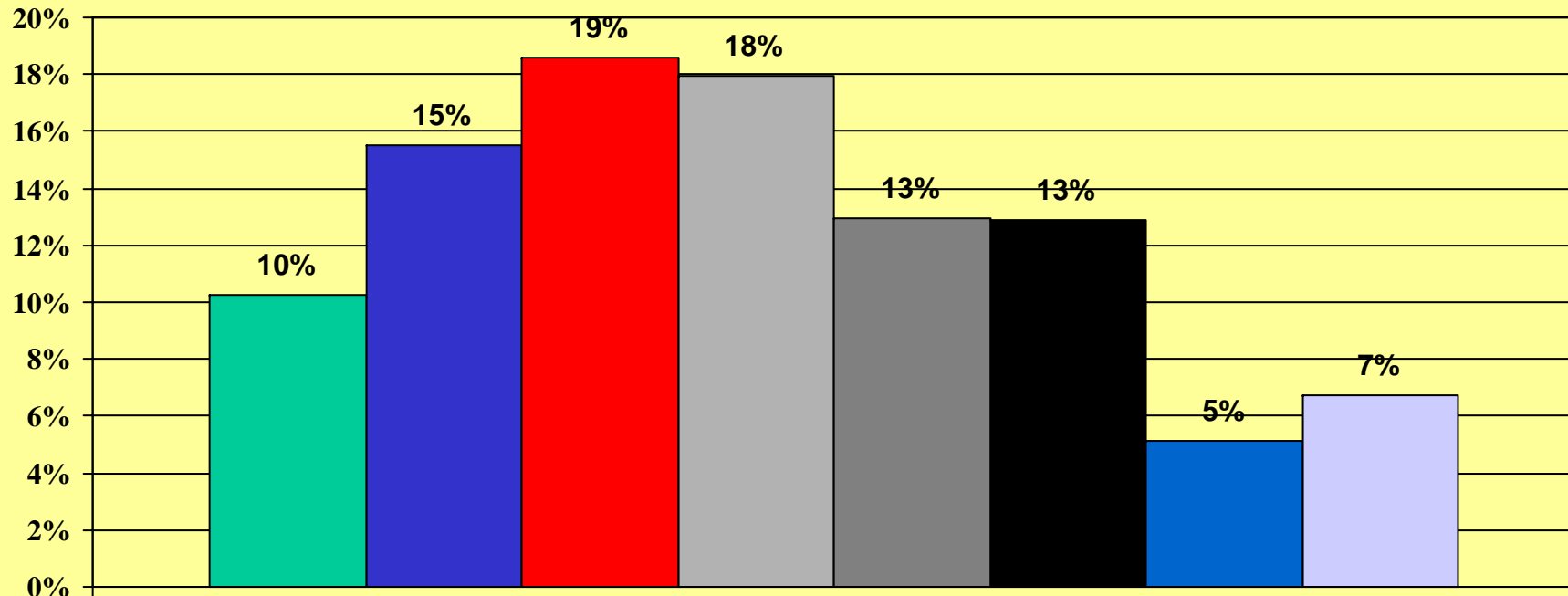


November 2007

Thompson Clinton Not sure

CIVITAS INSTITUTE

# In deciding who you would like to see elected President, which one of the following issues is most important to you:

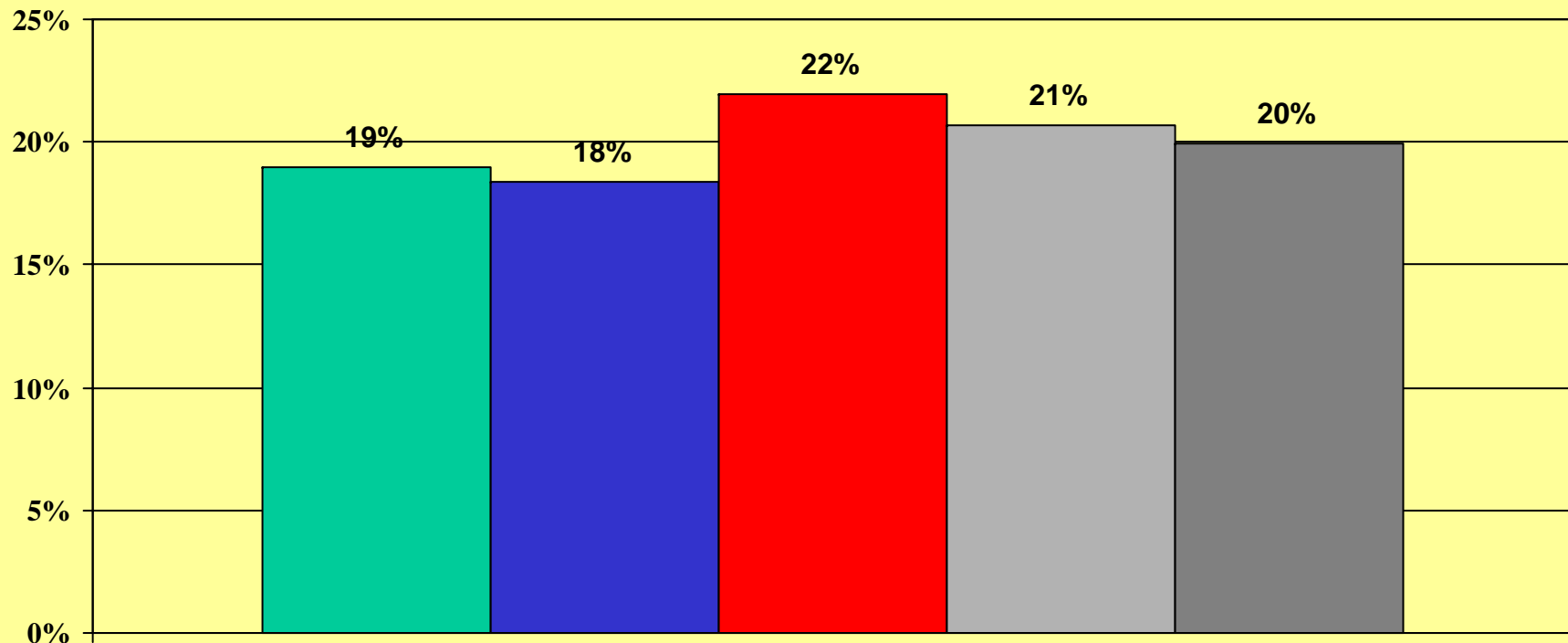


November 2007



CIVITAS INSTITUTE

**Regardless of the candidates running for President, would you prefer to see a Democrat or Republican elected? Do you feel strongly about that?**

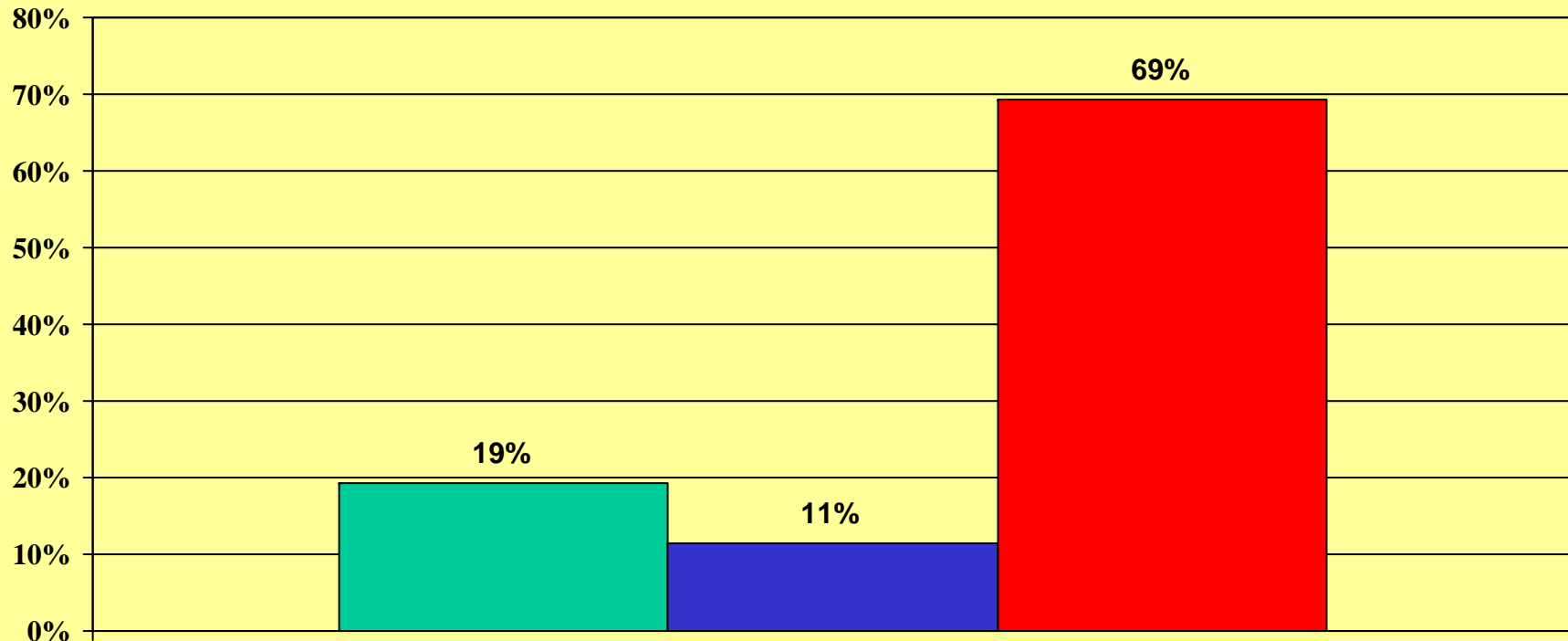


November 2007

■ Strongly Republican ■ Republican ■ Democrat ■ Strongly Democrat ■ Not sure

CIVITAS INSTITUTE

# If the 2008 Democratic primary for United States Senate were held today, would you be voting for:

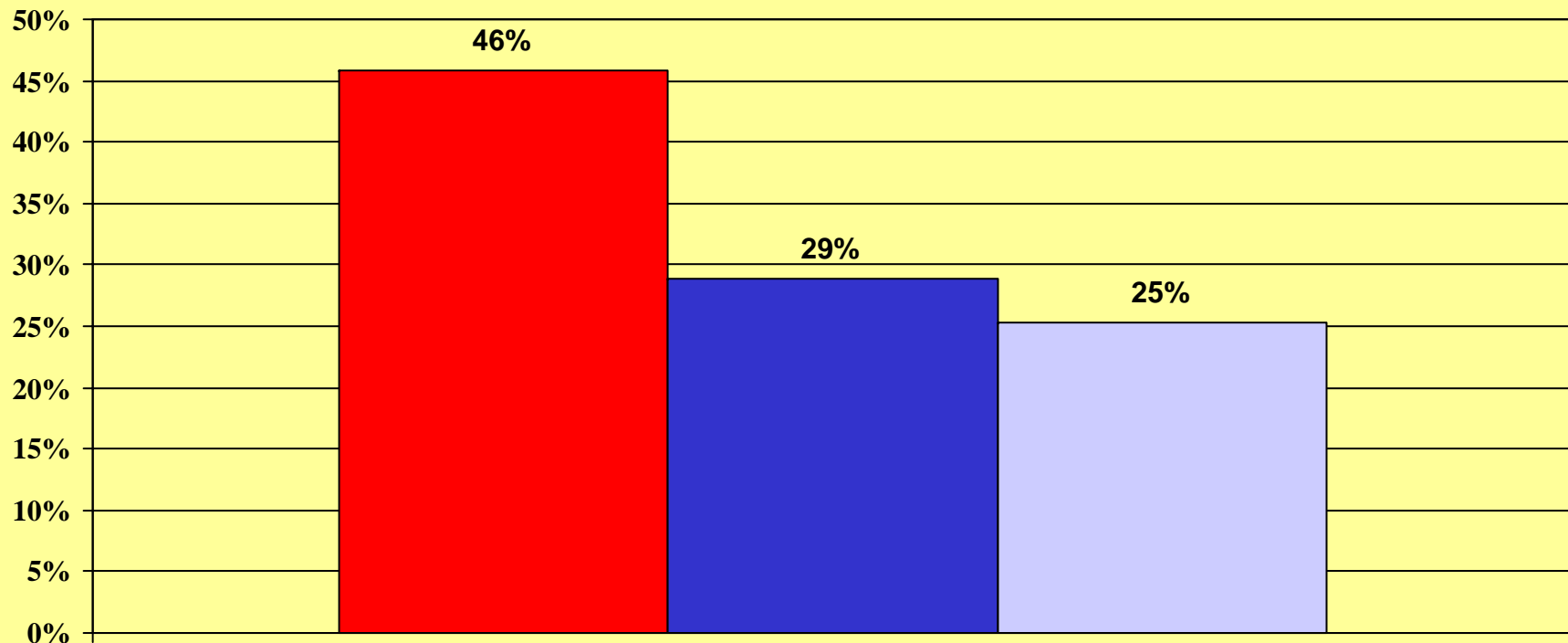


November 2007

■ Kay Hagan ■ Jim Neal ■ Not sure

CIVITAS INSTITUTE

**If the 2008 election for United States Senate were held today and the candidates were Republican Elizabeth Dole and Democrat Kay Hagan, for whom would you be voting?**

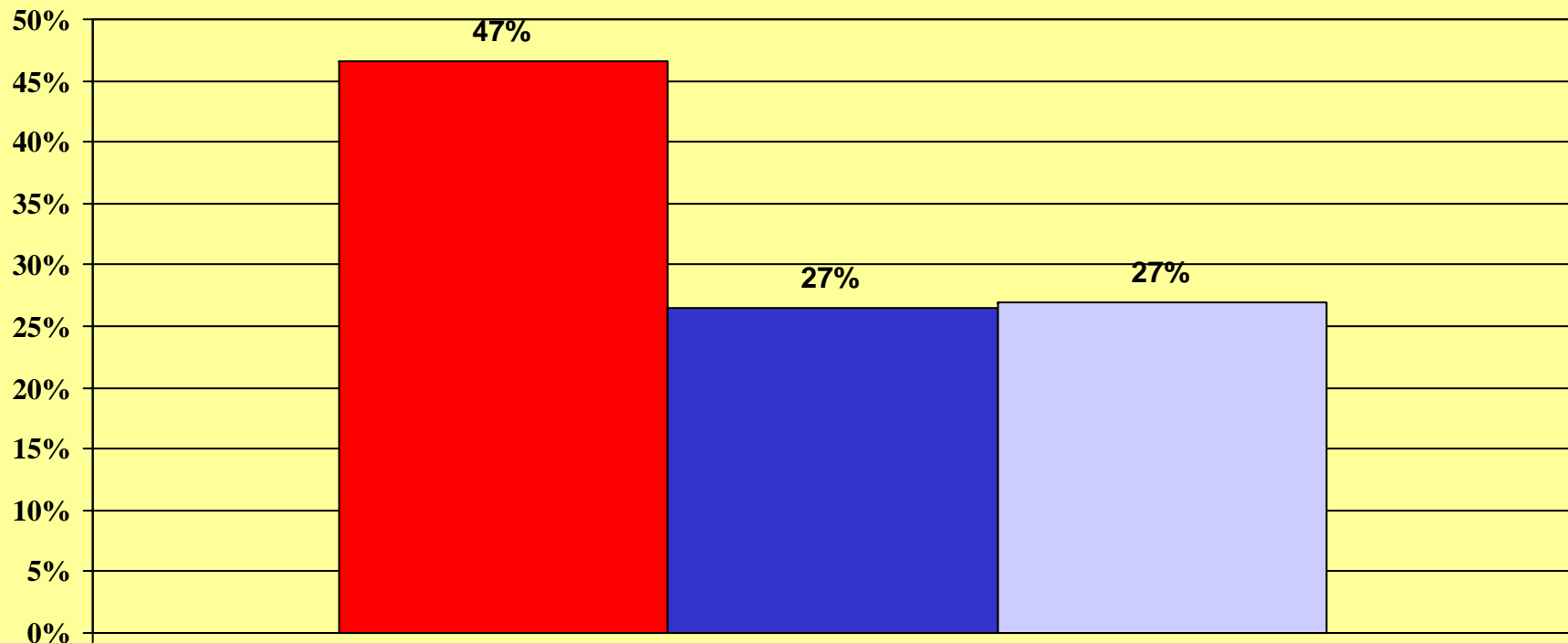


November 2007

■ Dole ■ Hagan ■ Not sure

CIVITAS INSTITUTE

**If the 2008 election for United States Senate were held today and the candidates were Republican Elizabeth Dole and Democrat Jim Neal, for whom would you be voting?**

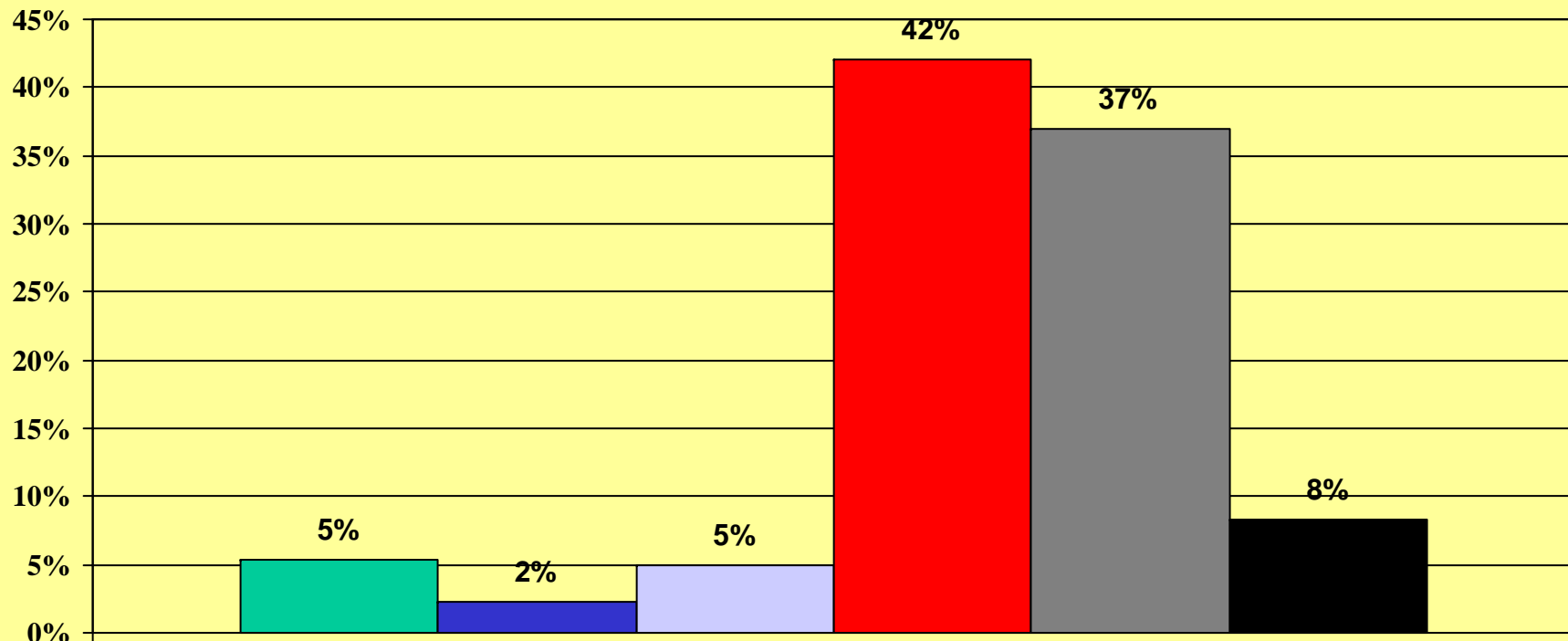


November 2007



CIVITAS INSTITUTE

# Would you be more or less likely to vote for a United States Senate candidate who was openly gay?

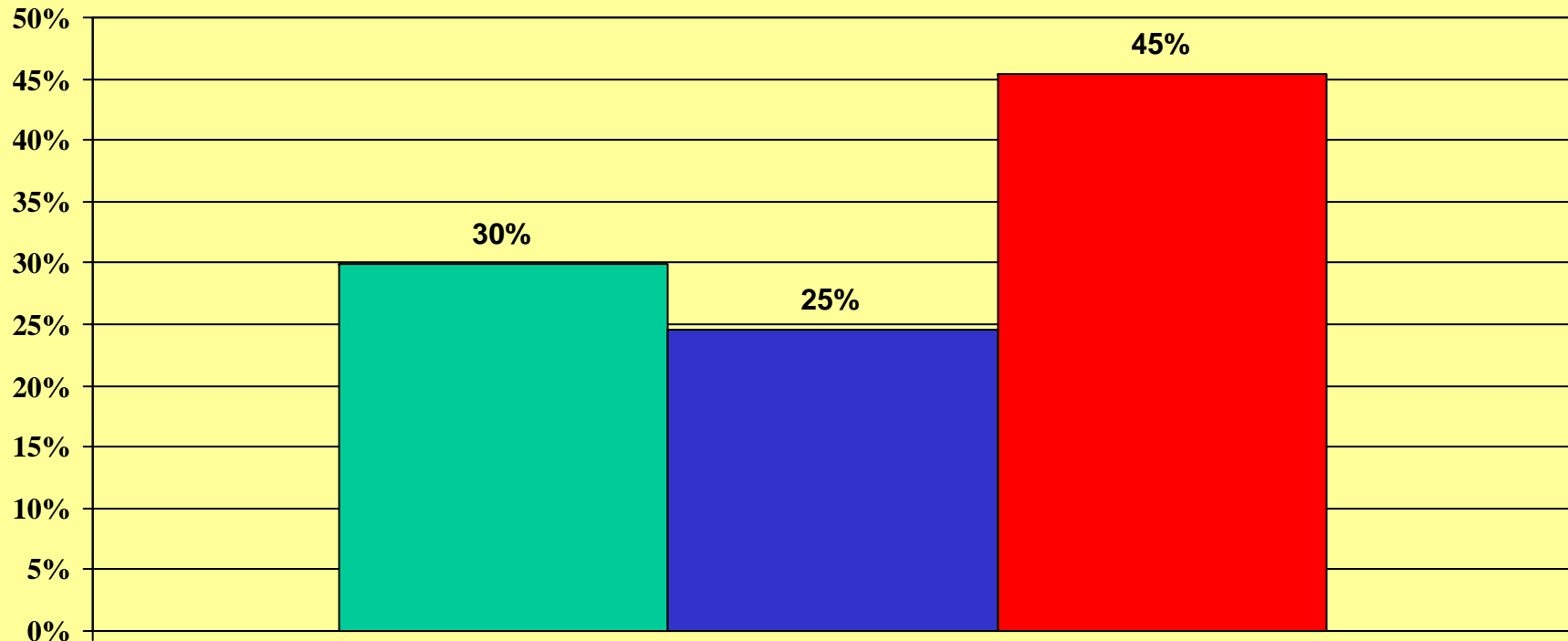


November 2007

■ Much more ■ Somewhat more ■ Somewhat less ■ Much less ■ No difference ■ Not sure

CIVITAS INSTITUTE

# If the 2008 Democratic primary election for Governor were held today, would you be voting for:

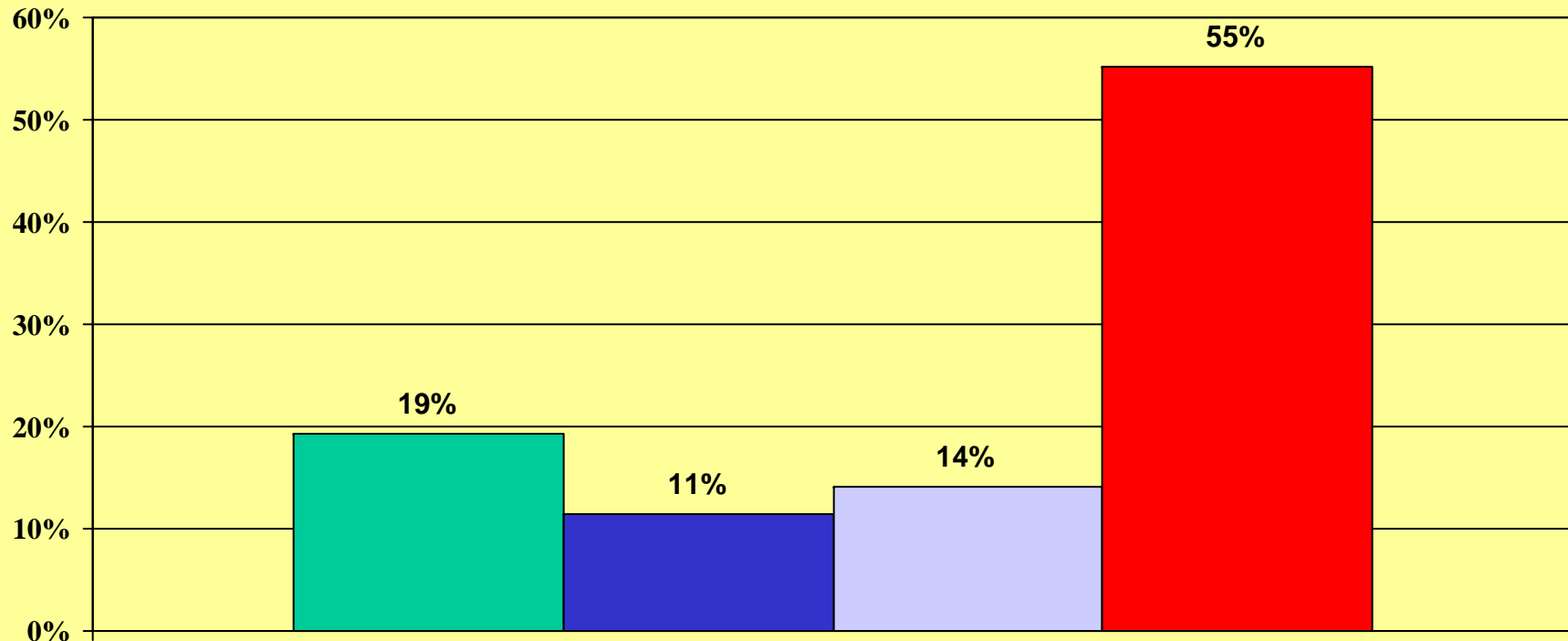


November 2007

■ Beverly Perdue ■ Richard Moore ■ Not sure

CIVITAS INSTITUTE

# If the 2008 Republican primary election for Governor were held today, would you be voting for:

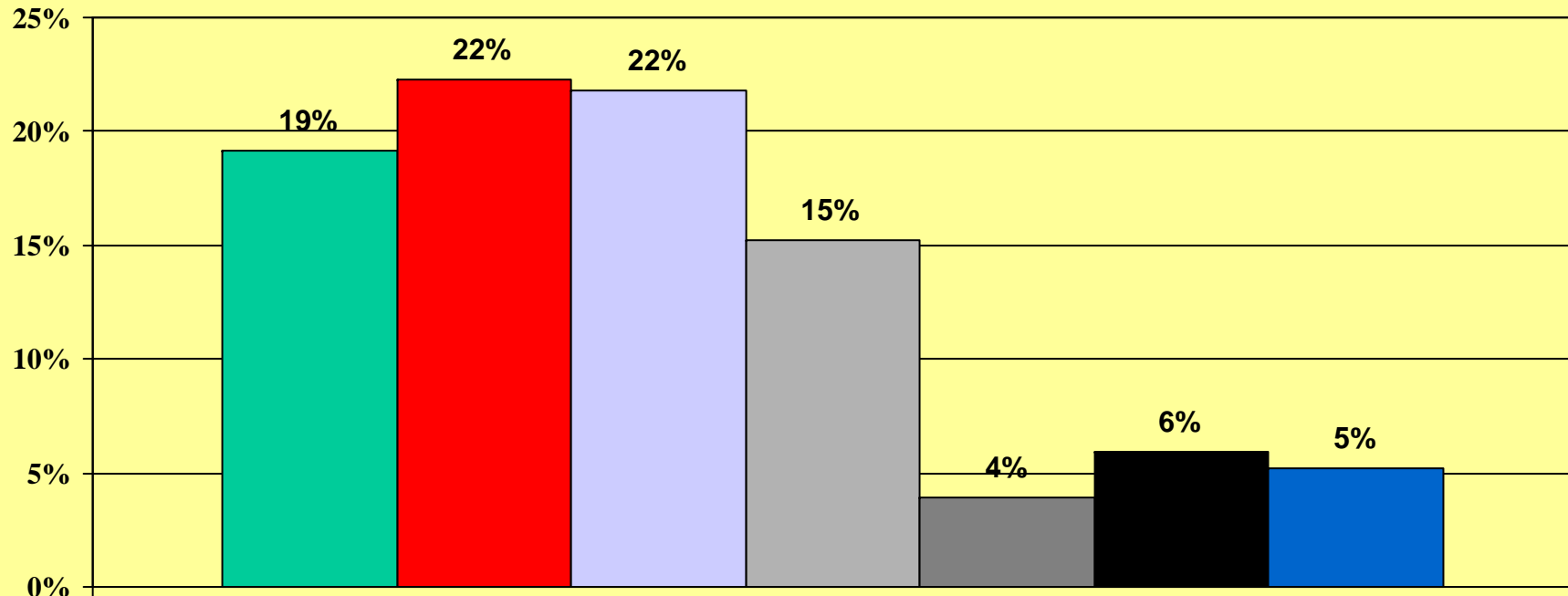


November 2007

■ Bill Graham ■ Bob Orr ■ Fred Smith ■ Not sure

CIVITAS INSTITUTE

# In deciding who you would like to see elected Governor, which of the following issues is more important to you:

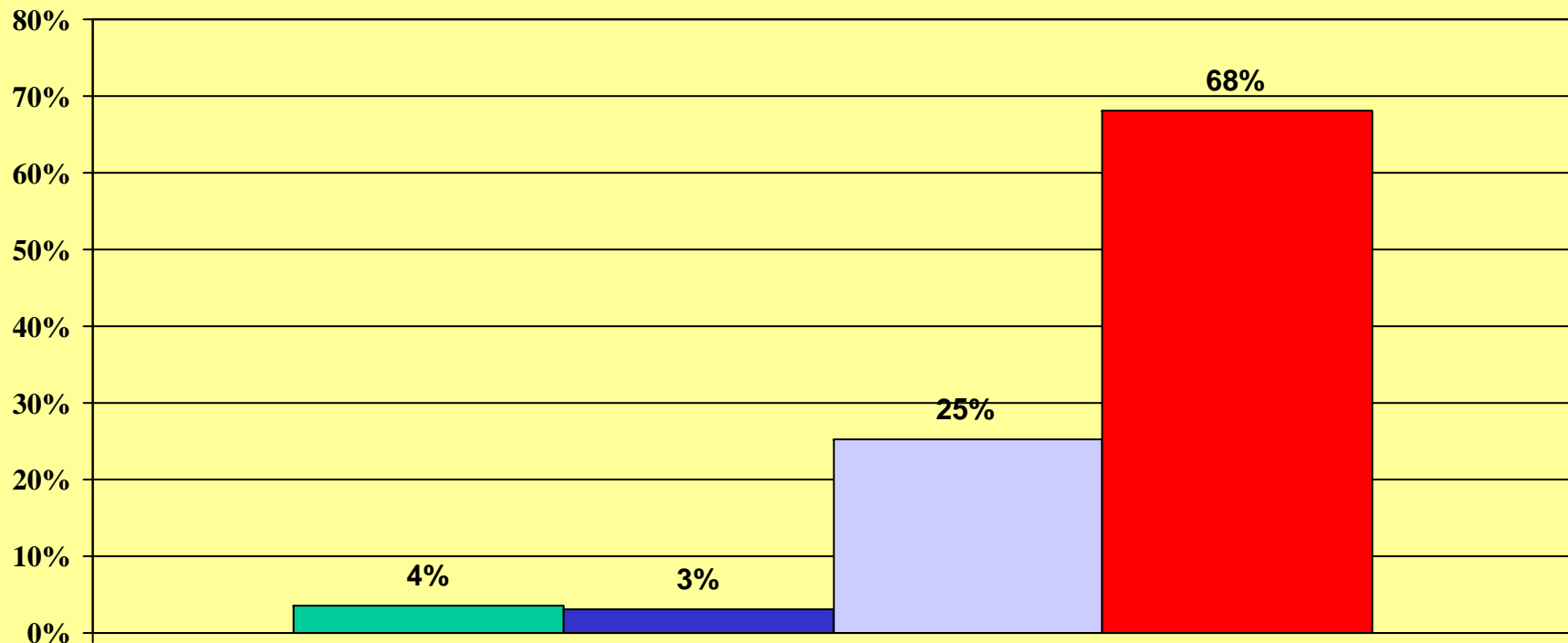


November 2007

■ Improve prim/sec education ■ Laws/illegal immigration ■ Improve/expand health care ■ Create/save jobs  
■ Roads/transportation ■ Protecting moral values ■ Deal w/scandals/corruption

CIVITAS INSTITUTE

# Do you have a favorable or unfavorable opinion of Robert Pittenger?

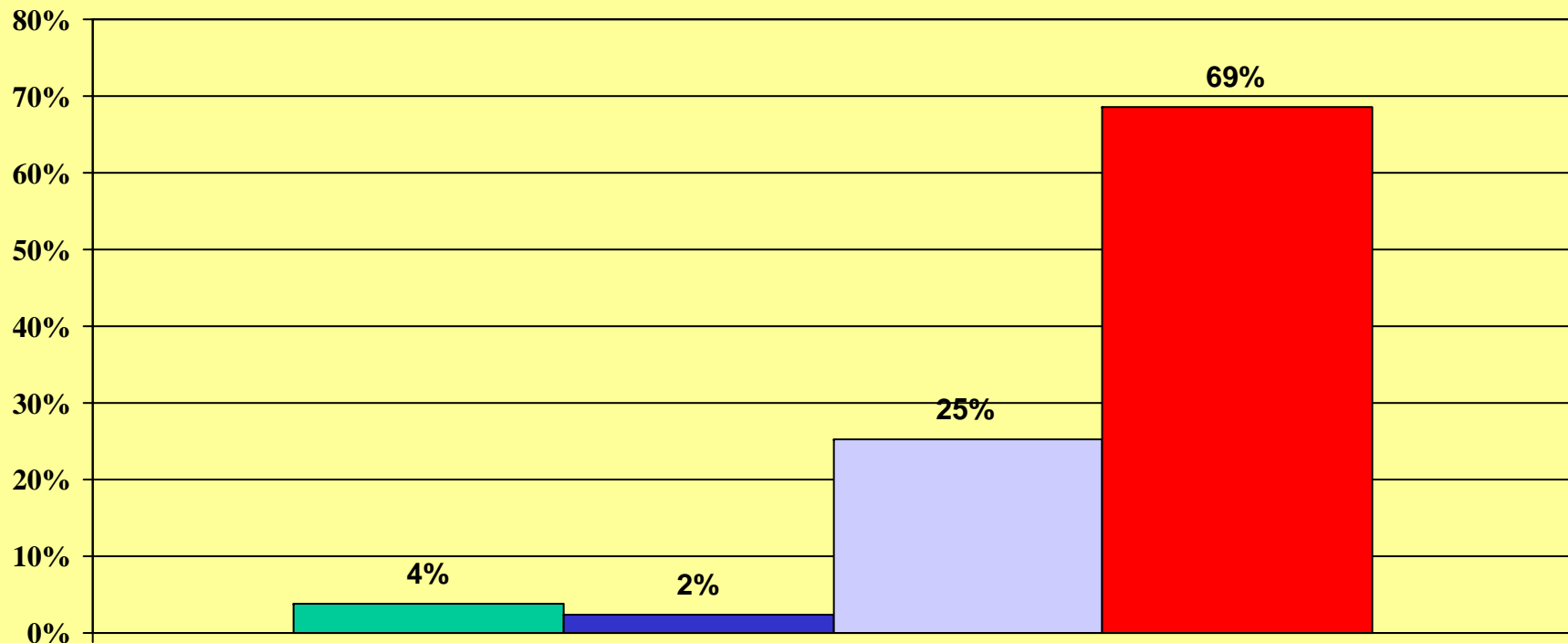


November 2007

Favorable Unfavorable No opinion Not aware

CIVITAS INSTITUTE

# Do you have a favorable or unfavorable opinion of Walter Dalton?

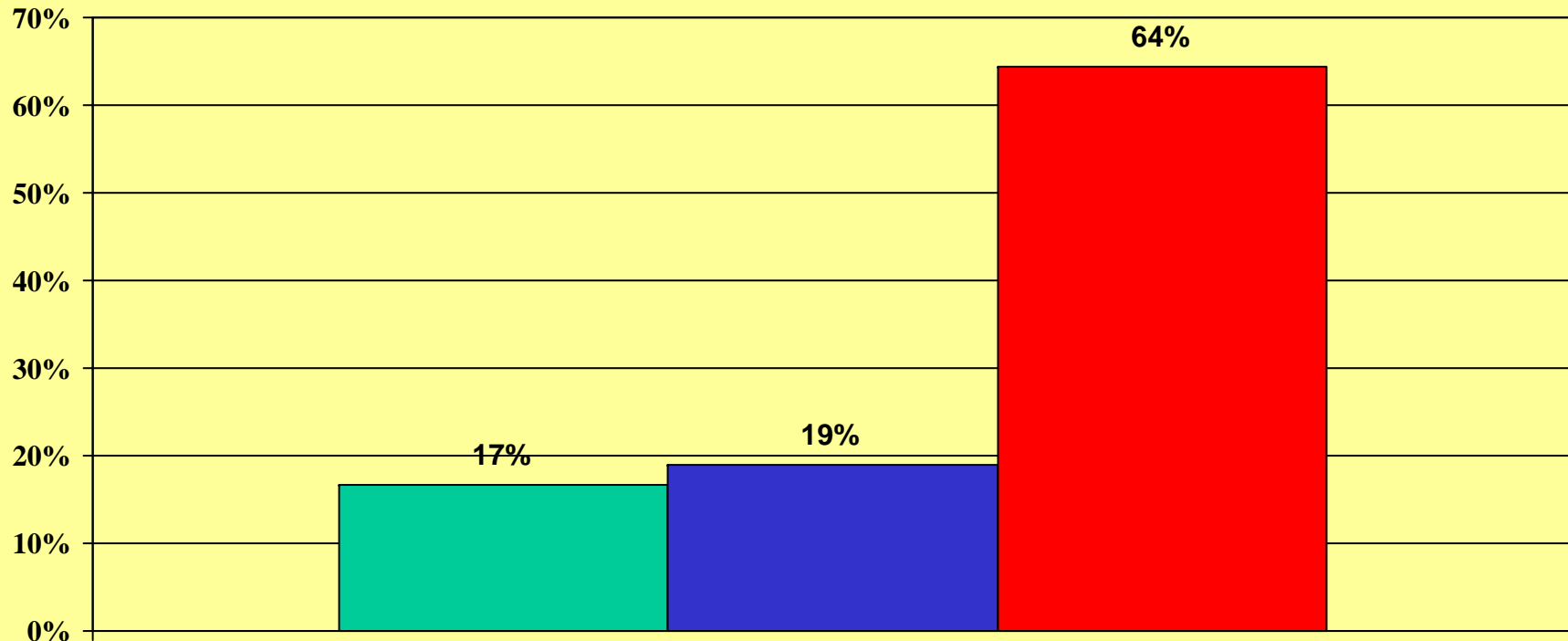


November 2007

Favorable Unfavorable No opinion Not aware

CIVITAS INSTITUTE

# If the election for Lt. Governor were held today, which candidate would you support:

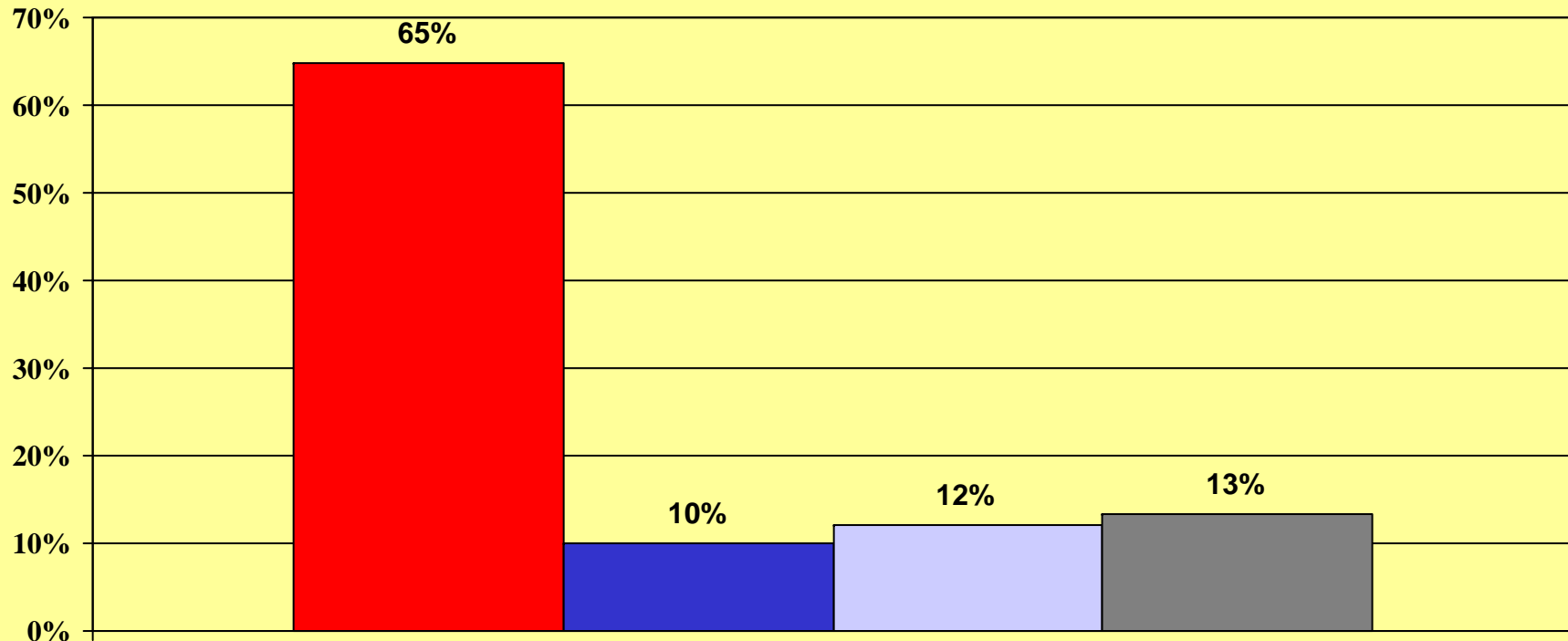


November 2007

■ Rep Robert Pittenger ■ Dem Walter Dalton ■ Not sure

CIVITAS INSTITUTE

**In the November election voters in several counties approved bonds for projects such as community college funding, sewer and park improvements. How do you think these bonds will be repaid:**

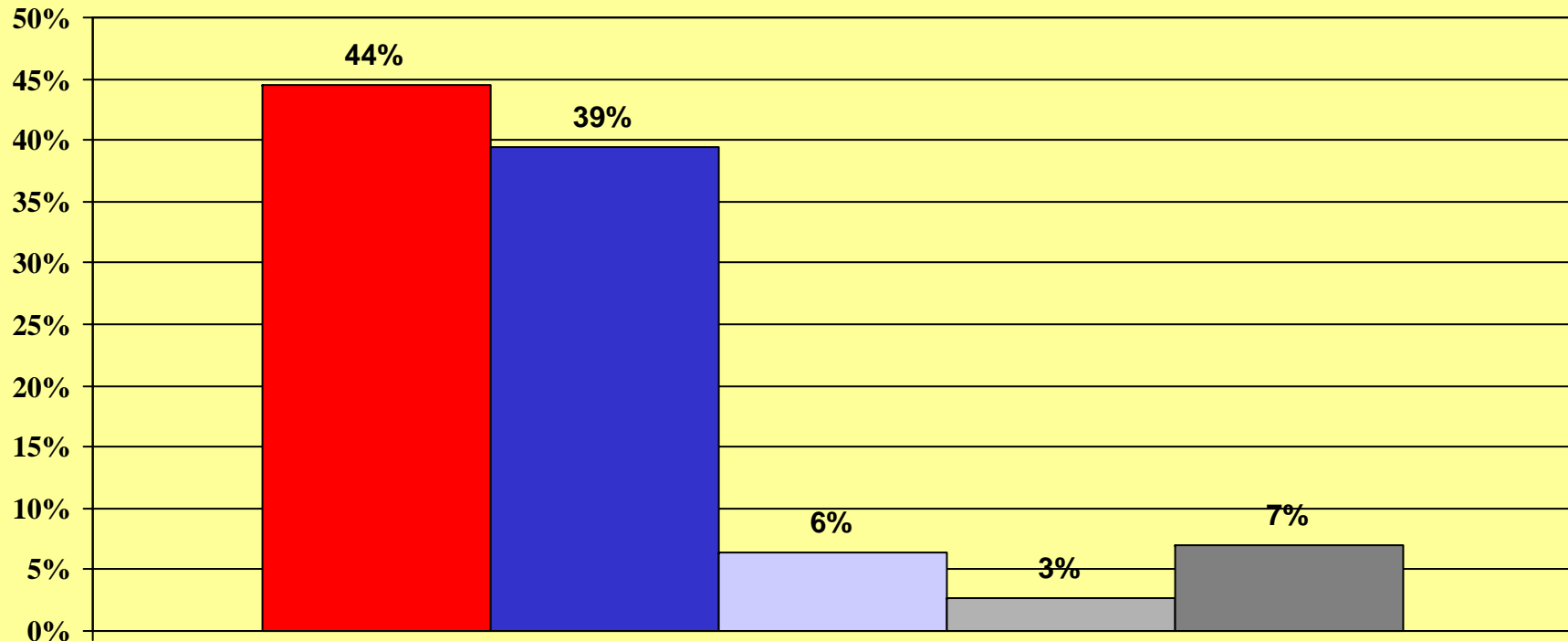


November 2007

■ By raising taxes ■ By cutting spending ■ Growth/expands tax base ■ Not sure

CIVITAS INSTITUTE

# Which of the following should be the official poverty level for a family of four in North Carolina:

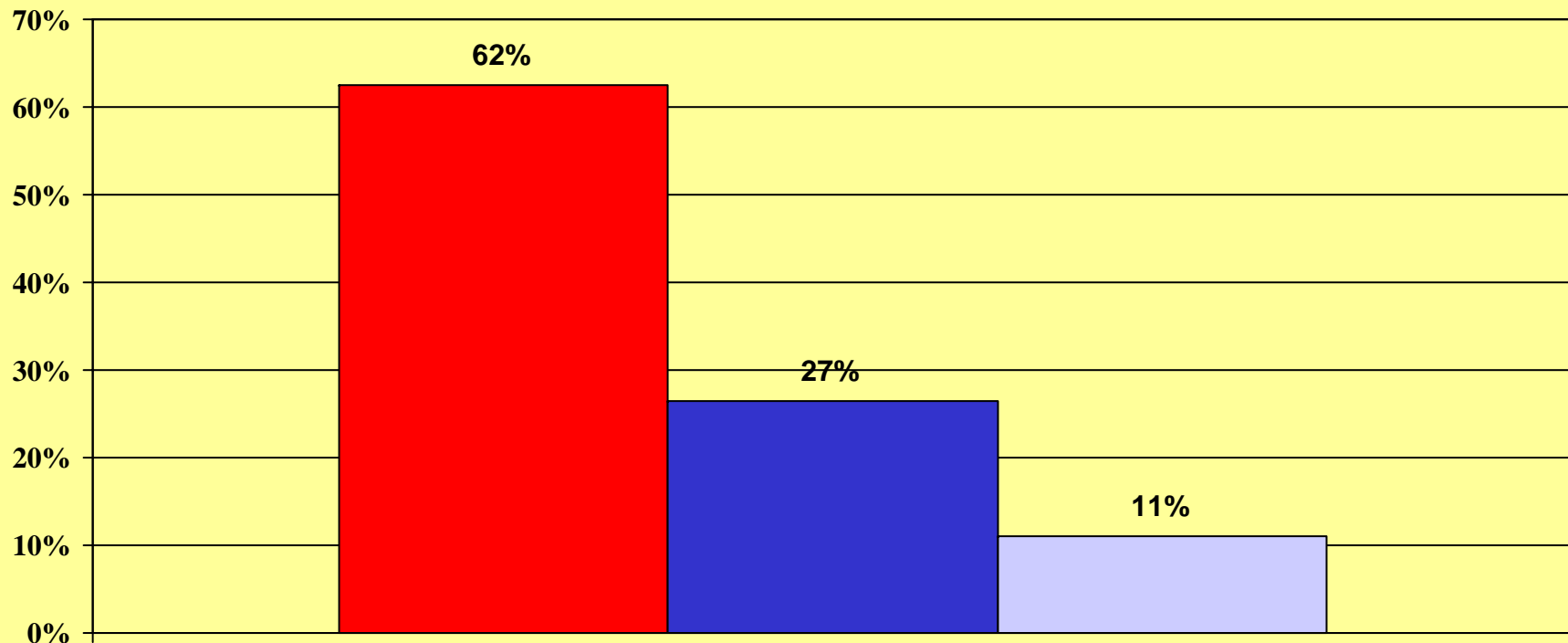


November 2007

■ \$21,000 or less ■ \$42,000 ■ \$63,000 ■ \$80,000 ■ Not sure

CIVITAS INSTITUTE

**Do you believe the report in the News and Observer that recently reported that 49% of the State's school children live below the poverty line?**

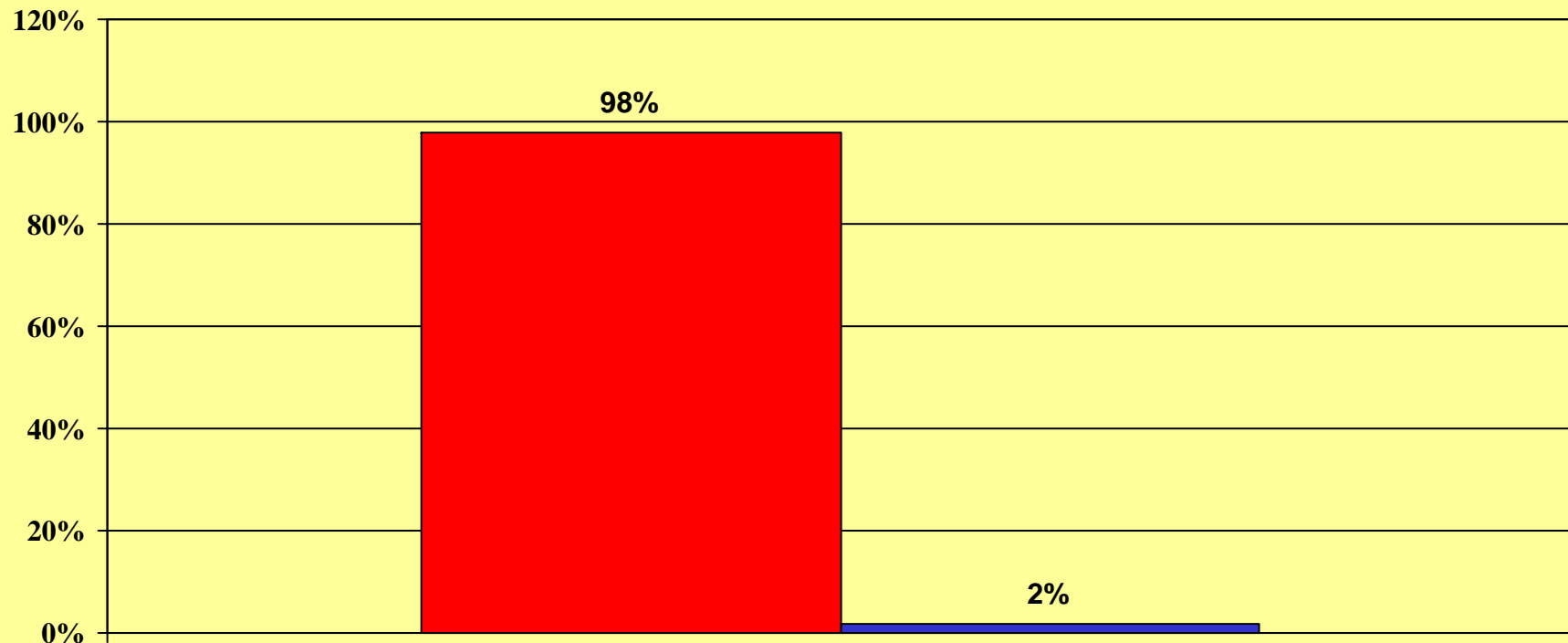


November 2007

■ Yes ■ No ■ Not sure

CIVITAS INSTITUTE

**Do you personally have an official photo id, such as a driver's license, an id card from the D.M.V., a military id or a U.S. passport?**

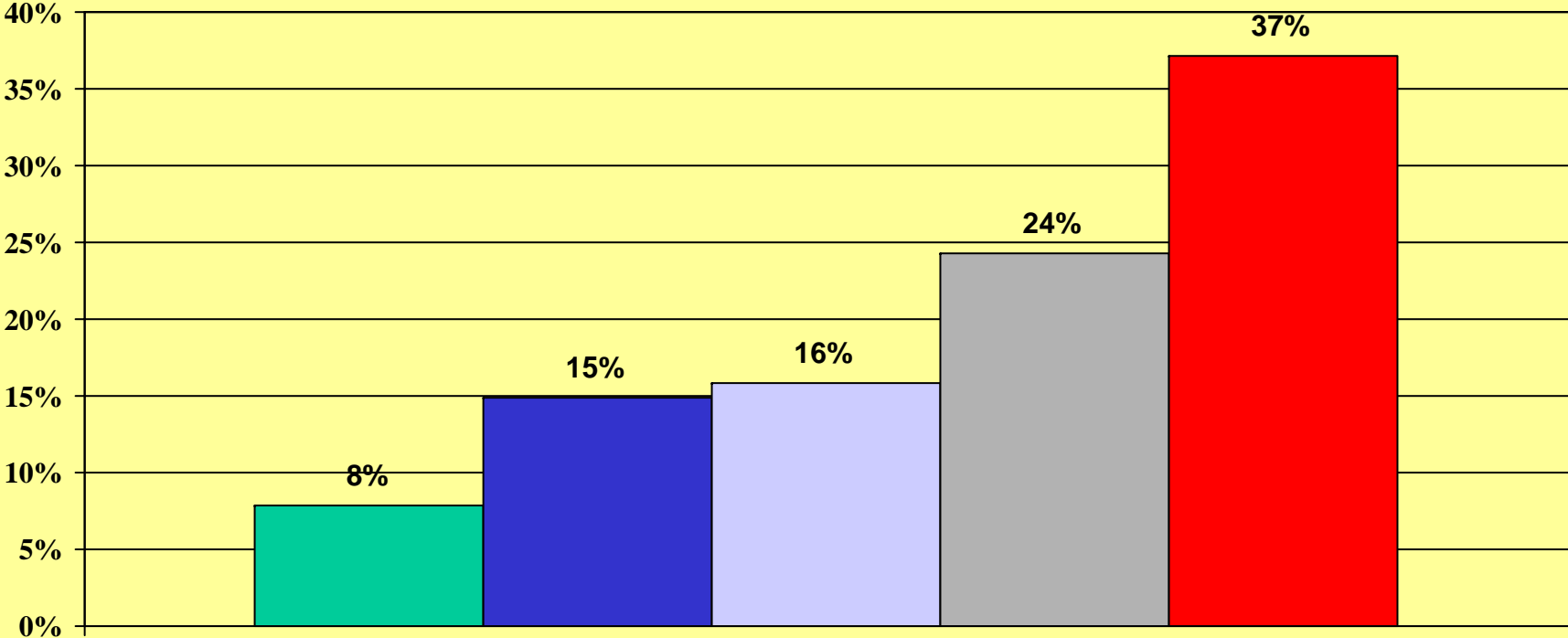


November 2007

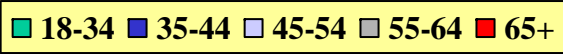
Yes No

CIVITAS INSTITUTE

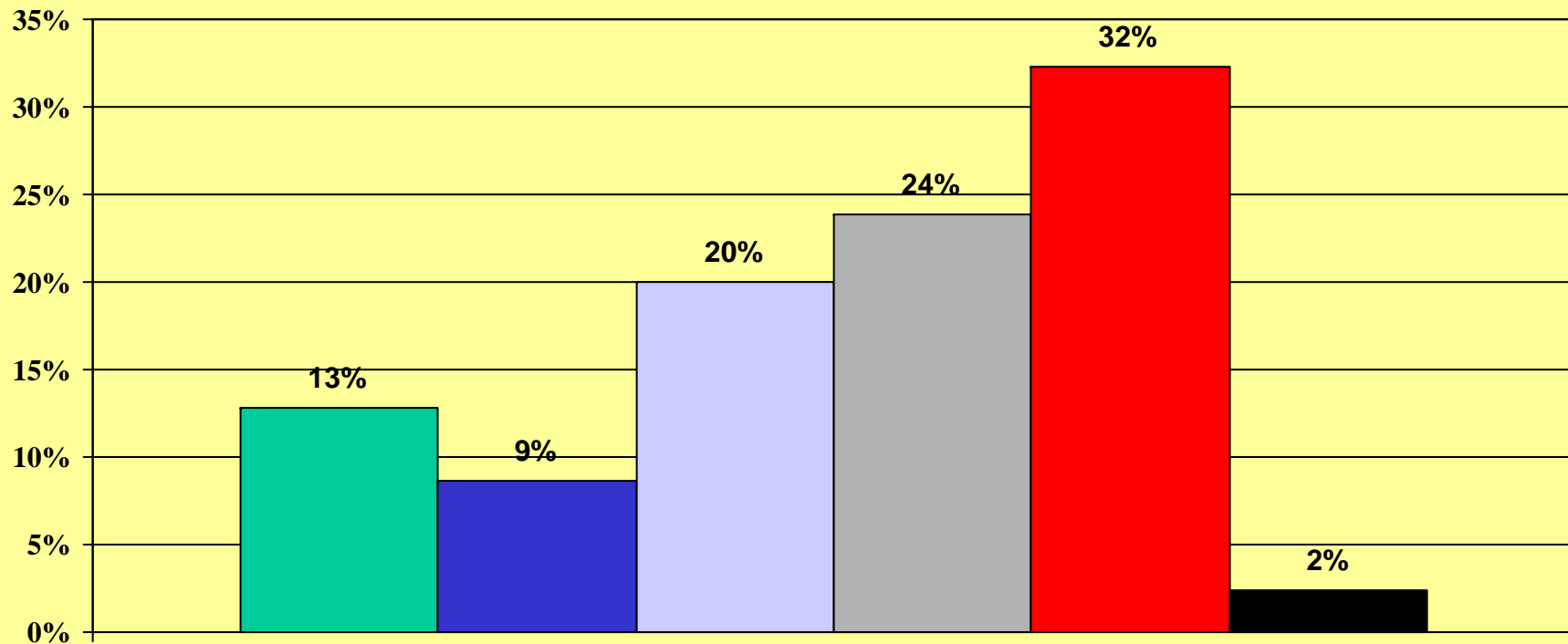
# Age group



November 2007



# Political philosophy

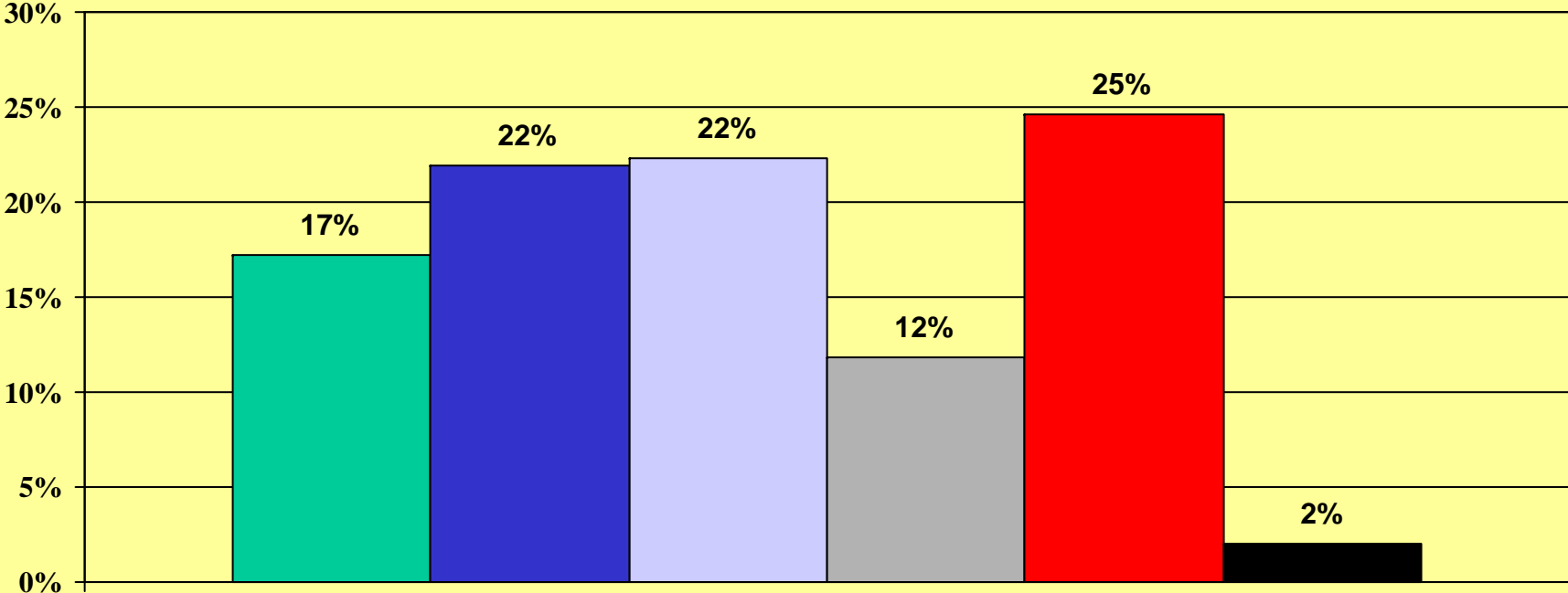


November 2007

Very liberal Somewhat liberal Somewhat conservative Very conservative Moderate Not sure

CIVITAS INSTITUTE

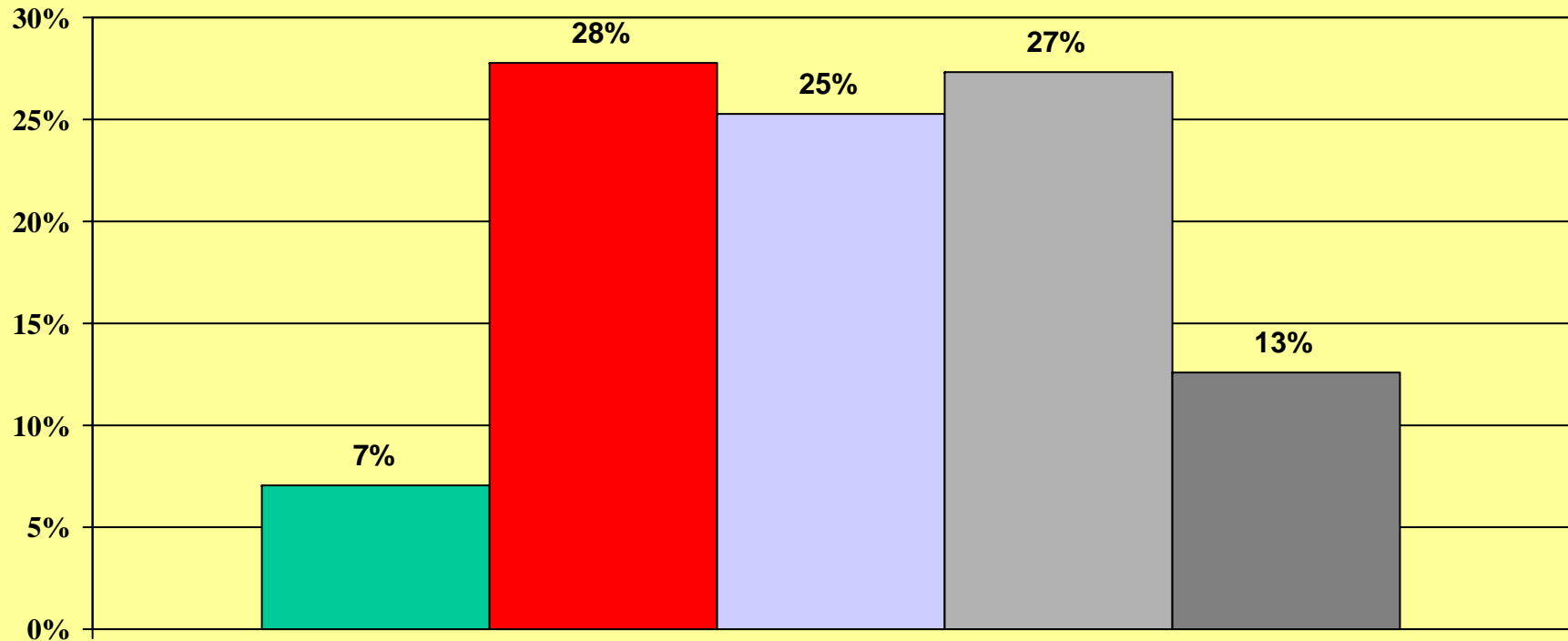
# Regardless of your party registration, do you:



November 2007

- Always vote Democrat
- Vote Dem more than Rep
- Vote Rep more than Dem
- Always vote Republican
- Both equally/split ticket
- Not sure

# Education

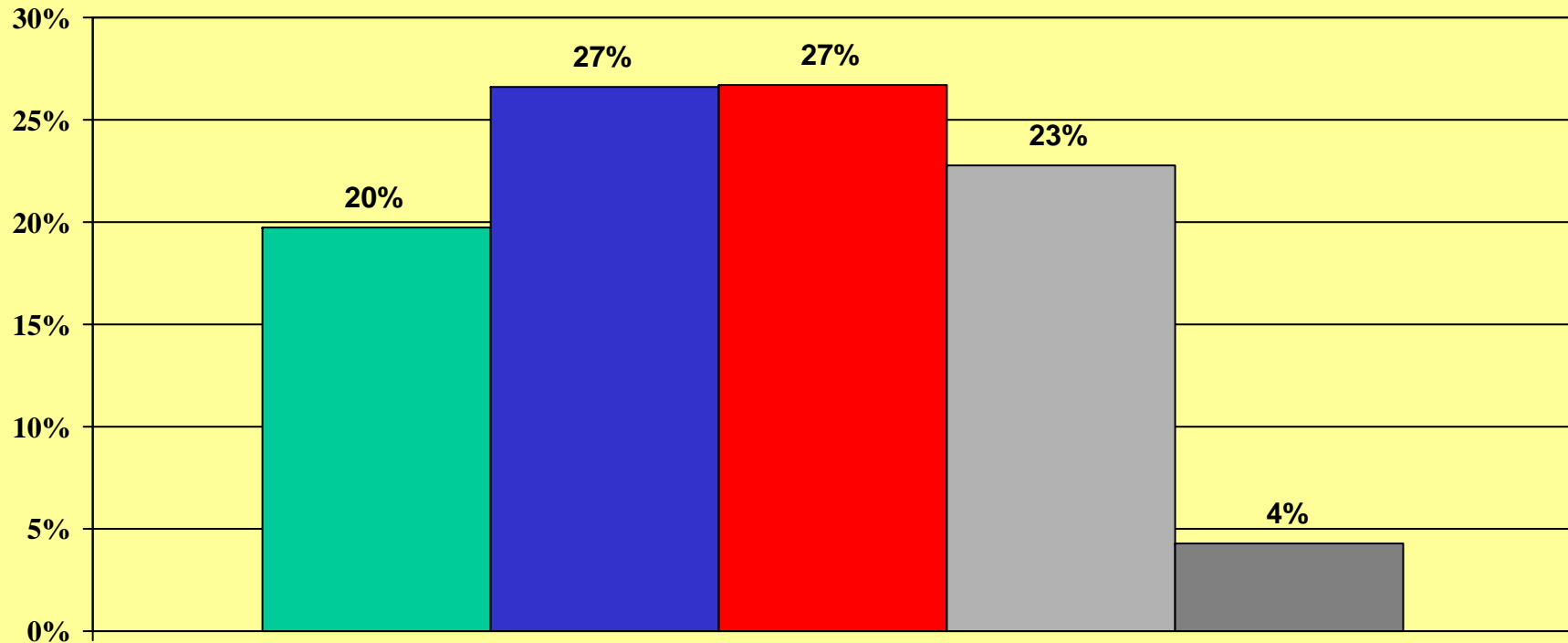


November 2007

■ Less than hs graduate ■ High School graduate ■ 2 yr college/technical ■ 4 yr college graduate ■ Post Graduate

CIVITAS INSTITUTE

# Family income

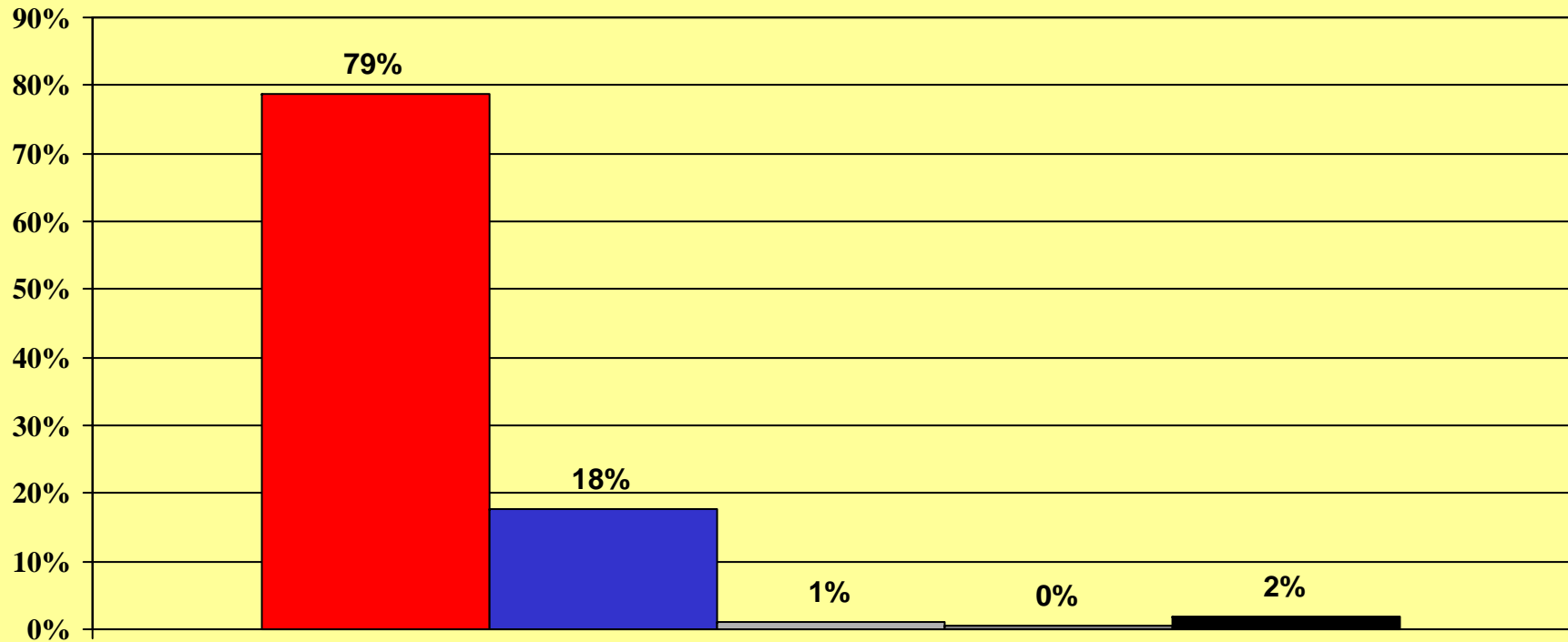


November 2007

■ Under \$25,000 ■ \$25,000-\$49,999 ■ \$50,000-\$74,999 ■ \$75,000 or more ■ NOT SURE

CIVITAS INSTITUTE

# National heritage

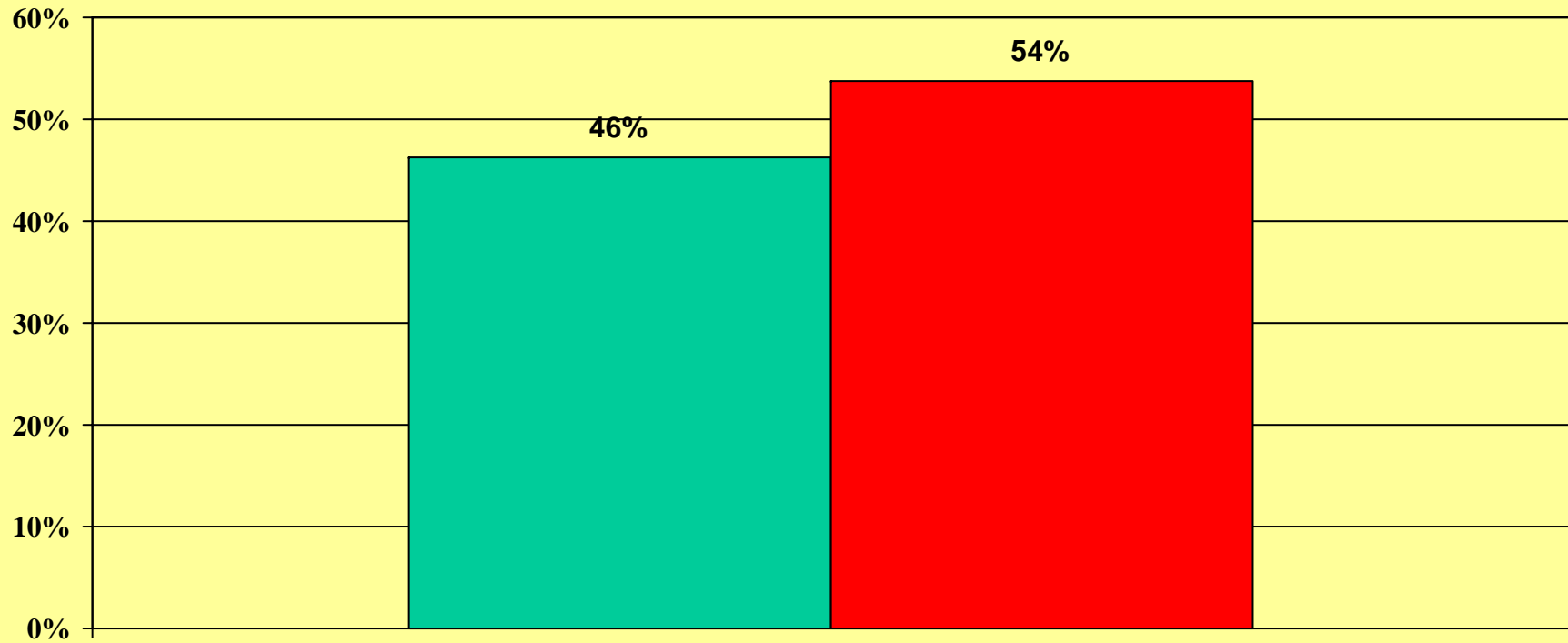


November 2007

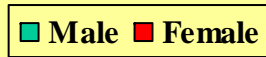
■ Caucasian ■ African-American ■ Native American ■ Asian ■ Other

CIVITAS INSTITUTE

# Gender

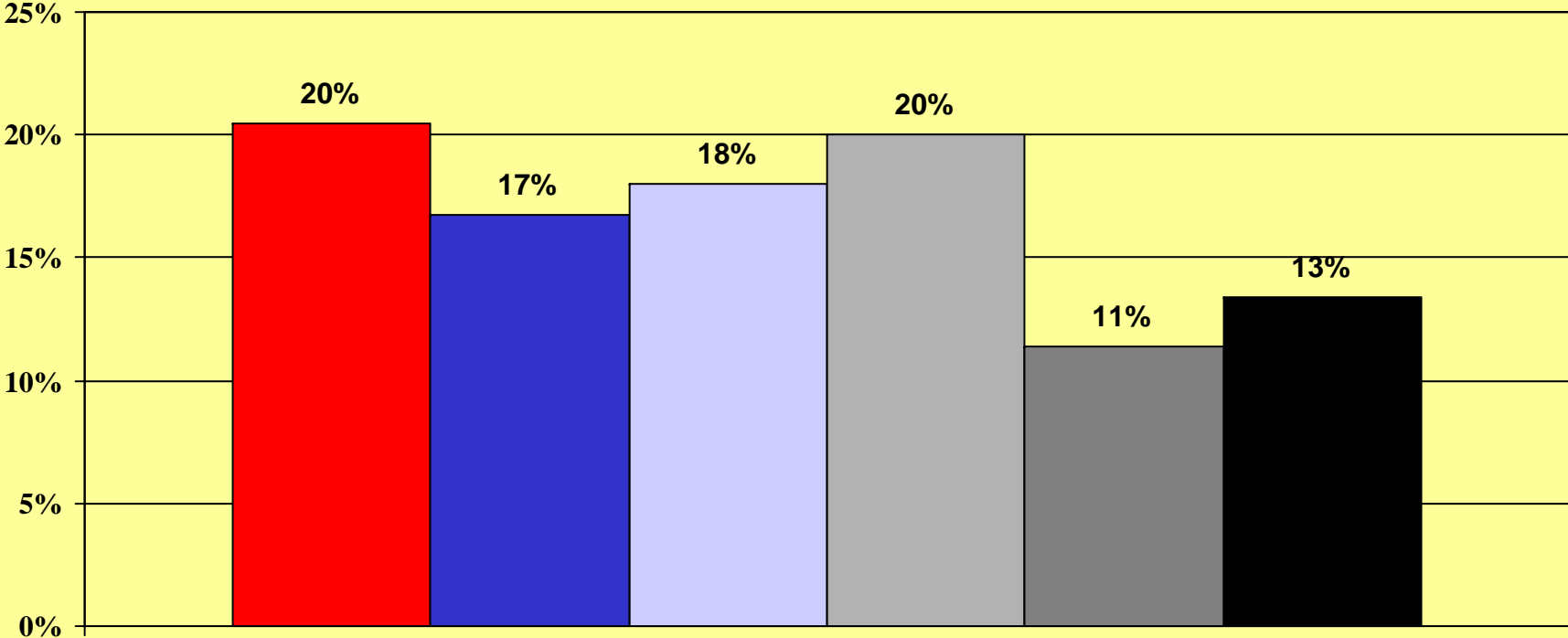


November 2007



CIVITAS INSTITUTE

# Geographic area



November 2007

■ Charlotte ■ Western ■ Piedmont Triad ■ Triangle ■ Northeast ■ Southeast

CIVITAS INSTITUTE